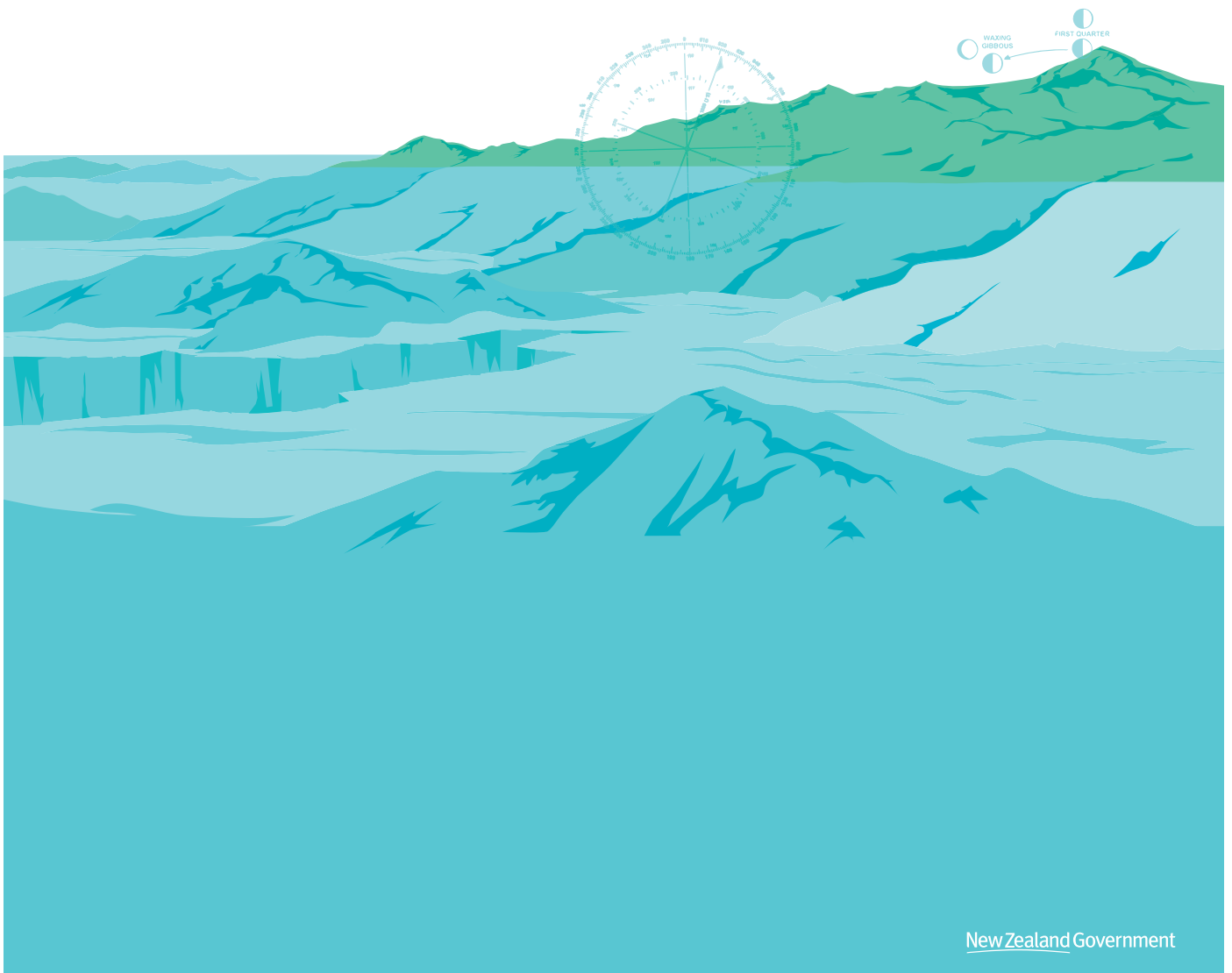


NEW ZEALAND CHART CATALOGUE

15TH EDITION | NZ 202



NEW ZEALAND

CHART CATALOGUE

15TH EDITION

NZ 202

Published December 2010

CONTENTS

| | |
|--|---------|
| Record of Corrections | 2 |
| NZ Charting Area | 3 |
| Chart Catalogue | 4 |
| Chart Information | 5 |
| Use of Charts | 6 |
| Product Information | 7 |
| NZ Carriage Requirements & Chart Retailers | 8 |
| Maritime Safety Information | 9 |
| Indexes | |
| Pacific Ocean | 10 & 11 |
| New Zealand | 12 & 13 |
| North Island | 14 & 15 |
| South Island | 16 & 17 |
| Northern Zone | 18 & 19 |
| Auckland Zone | 20 & 21 |
| Cook Strait Zone | 22 & 23 |
| Southern Zone | 24 & 25 |
| South West Pacific Ocean | 26 & 27 |
| Tonga | 28 & 29 |
| Southern Ocean and Ross Dependency | 30 & 31 |
| Numerical Chart List | 32 |
| Notes | 33 |

ISSN 0113-5597

**Published by Land Information New Zealand
New Zealand Hydrographic Authority**

Crown Copyright Reserved

RECORD OF CORRECTIONS PUBLISHED IN THE NEW ZEALAND NOTICES TO MARINERS

This Catalogue is corrected up to NZ NTM Edition 12/2019 dated 14 June 2019.

Subsequent amendments to this Catalogue will be published in Section IV of the New Zealand Notices to Mariners (NTM).

Copies of the NZ NTM Edition are available from the LINZ website:

www.linz.govt.nz/sea

See the list below to know when corrections have been applied to the Chart Catalogue:

2018 Edition Number

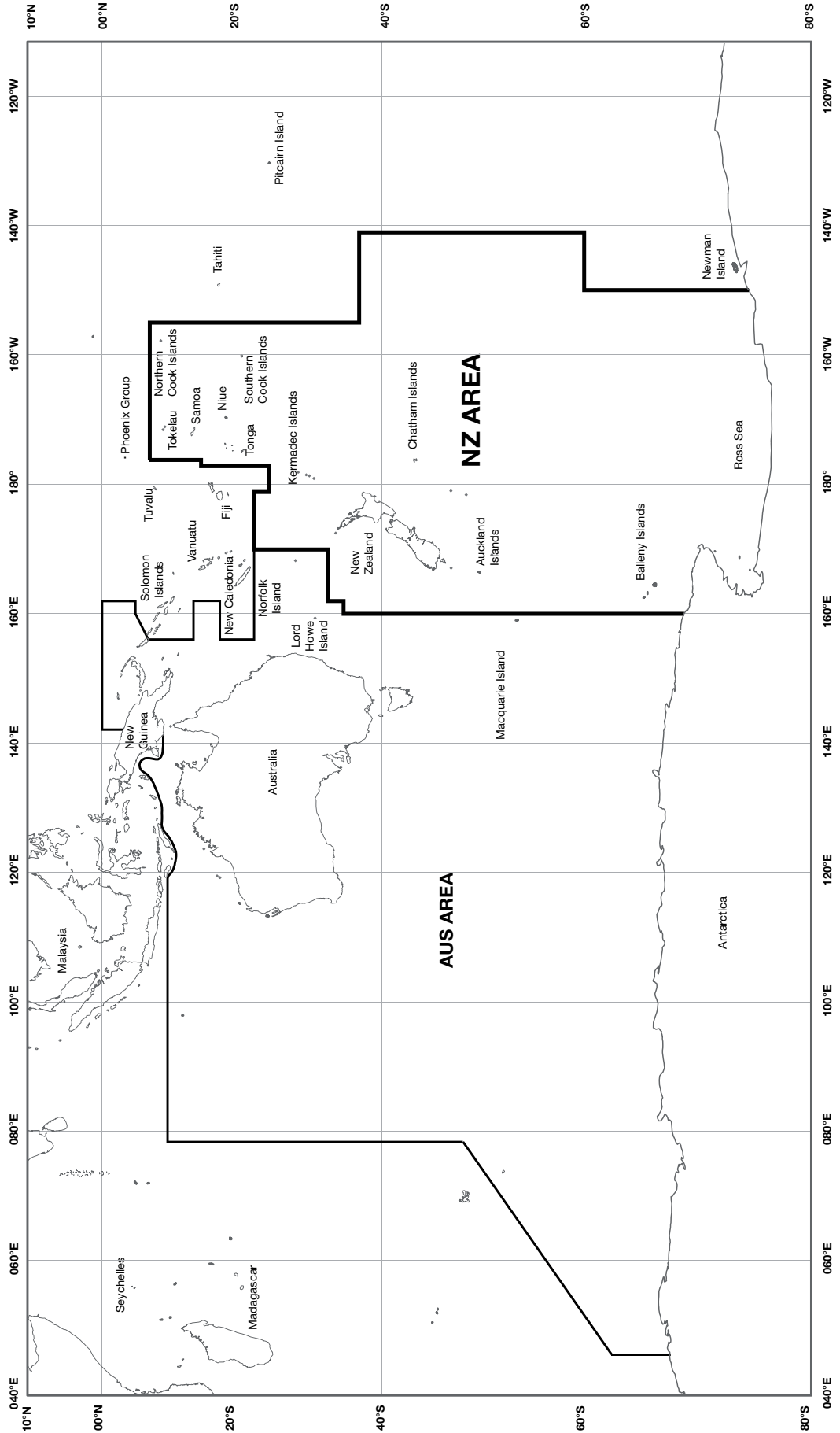
- 1...Corrected.....
- 2.. Nil.....
- 3...Corrected.....
- 4...Corrected.....
- 5...Corrected.....
- 6...Corrected.....
- 7...Corrected.....
- 8...Corrected.....
- 9... Nil.....
- 10..Corrected.....
- 11..Corrected.....
- 12..Corrected.....
- 13..Corrected.....
- 14.. Nil.....
- 15.. Nil.....
- 16.. Nil.....
- 17..Corrected.....
- 18..Corrected.....
- 19.. Nil.....
- 20..Corrected.....
- 21..Corrected.....
- 22.. Nil.....
- 23.. Nil.....
- 24.. Nil.....
- 25..Corrected.....
- 26.....

2019 Edition Number

- 1... Nil.....
- 2... Corrected.....
- 3... Nil.....
- 4... Corrected.....
- 5... Corrected.....
- 6... Corrected.....
- 7... Corrected.....
- 8... Corrected.....
- 9... Nil.....
- 10... Corrected.....
- 11... Corrected.....
- 12... Nil.....
- 13.....
- 14.....
- 15.....
- 16.....
- 17.....
- 18.....
- 19.....
- 20.....
- 21.....
- 22.....
- 23.....
- 24.....
- 25.....
- 26.....

In accordance with agreements between New Zealand (NZ), Australia (AUS) and the British Admiralty (BA) for reducing duplication in charting activities, New Zealand has a defined Charting Area (**NZ AREA**)

AREAS OF NEW ZEALAND CHARTING AND COVERAGE OF NOTICES TO MARINERS



4

CHART CATALOGUE

Introduction

Land Information New Zealand (LINZ), the New Zealand Hydrographic Authority produces official nautical Charts to aid safe navigation in NZ waters and certain areas of Antarctica and the South West Pacific within the NZ AREA as shown in the diagram on page 3. They are available for purchase from LINZ approved Chart retailers. Page 8 of this document has more information and for full contact details visit the LINZ website: www.linz.govt.nz/sea.

This Chart Catalogue (NZ 202) lists the Paper Charts produced by LINZ, New Zealand Hydrographic Authority. The Charts are grouped into the regions they cover and basic information such as Chart number, title, scale, published and new edition dates is provided.

There is also an online Chart Catalogue which allows the Mariner to search all NZ Charts by region or number/title. Each Chart web page provides a full record of all NTM relating to each Chart and allows the user to view each individual NTM. Both the online version and this downloadable PDF Chart Catalogue are available from the LINZ website.

Notice To Mariners

Using Charts safely involves keeping them up-to-date using NTM. LINZ publishes NTMs in fortnightly editions of New Zealand Notices to Mariners. These are safety critical messages affecting Charts originated by LINZ, New Zealand Hydrographic Authority. There are two main types of NTM:

- Annual NTMs are numbered from 1–18 and are published each July as part of the NZ Nautical Almanac (NZ 204). They provide important safety critical information for the Mariner and are updated as required by NTM.
- NTMs are numbered sequentially from 19 starting with the first NTM Edition issued each January and are the authority for correcting official NZ Charts and nautical publications. For more details on the content of this service see the NTM section on the LINZ website.

LINZ NTMs are the authority for correcting New Zealand and International Charts (INT) of the NZ AREA. These notices are repeated in British Admiralty editions of NTM; Charts may therefore be corrected from either publication.

Reporting Safety Information

It is very important for Mariners to notify LINZ immediately of any new or suspected dangers to navigation or any shortcomings in Charts and publications. This will ensure an NTM can be issued and Charts can be kept up to date. The preferred format for providing LINZ with this information is the Hydrographic Note (H Note). This form can be completed on the LINZ website and submitted electronically. Alternatively, a printable version of the H Note can be downloaded, filled out and faxed to LINZ. A paper copy of the H Note can also be found at the back of each NTM Edition and in the Nautical Almanac.

**New Zealand Hydrographic Authority
Land Information New Zealand (LINZ)
Radio New Zealand House
155 The Terrace
PO Box 5501
Wellington 6145
New Zealand**

**Free phone (NZ): 0800 665 463
or +64 4 460 0110
Fax: +64 4 460 0161
ntm@linz.govt.nz**

Changes to or defects in aids to navigation should be reported to the Rescue Coordination Centre New Zealand (RCCNZ), either via the nearest radio coast station or:

Free phone (NZ): 0508 472 269
Phone (INT): +64 4 577-8030
Fax: +64 (0)4 577-8038 or +64 (0)4 577-8041
Email: rccnz@maritimenz.govt.nz
Inmarsat-C (POR): 451 200 067

Amendments to Chart Catalogue

The Charts listed in the Catalogue are updated by NTM as safety critical information is received. Amendments to this Chart Catalogue will be published in Section IV of the New Zealand NTM Edition.

System of Chart numbering

The Chart number is printed in the two opposite corners on the face of each Chart and also appears on the label on the back of each copy.

Small scale planning and passage Charts of the Pacific and Southern Oceans (1:400 000-1:10 000 000) have five figure numbers beginning with 1. Small scale Charts of New Zealand's Exclusive Economic Zone have two figure numbers beginning with 2 or 3. Small scale Charts of the Pacific Islands have two figure numbers beginning with 8 or 9.

Medium scale coastal Charts of New Zealand (1:75 000-1:400 000) have two or three figure numbers beginning with 2, 4, 5, 6 or 7, the first figure being related to a particular area. Medium scale Charts of the Pacific Islands have two or three figure numbers beginning with 8 or 9, the first two figures being related to a particular island group.

Large scale Charts of both New Zealand and the Pacific Islands (1:5 000-1:75 000) have four figure numbers, the first two or three figures being the number of the next smaller scale Chart within which that Chart falls.

Units used on Charts

The majority of New Zealand Charts now have depths and heights in metres. DEPTHS IN METRES is boldly stated in the Chart title and in the border. Those Charts not yet metricated state depths in fathoms and heights in feet in the title. DEPTHS IN FATHOMS is boldly stated outside the chart border. In this Catalogue a fathoms Chart is indicated by an asterisk placed against the number. These charts will be progressively replaced by metric charts.

Publishing, new editions and NTM

The date of publication is shown in the centre under the bottom border of the Chart. Edition dates are inserted to the right of the publication details. When a Chart has been corrected by NTM, the year and number of the Notice is recorded at the bottom left-hand corner of the Chart. If a Chart is in stock it is hand corrected and the correction is incorporated in the next print. When a New Edition is issued all earlier copies of the Chart are cancelled.

International Charts

To improve charting of ocean areas without duplication of cartographic effort by many nations, the International Hydrographic Organisation (IHO) has achieved international agreement for three series of International Charts at scales 1:1 500 000, 1:3 500 000 and 1:10 000 000 in the South West Pacific.

LINZ publish these INT Charts in the NZ AREA, which provides the Mariner with worldwide coverage to a uniform specification. As part of this series NZ has 29 Charts covering its adjacent oceans and seas.

Each Chart has an international number with the prefix INT and a second number prefixed with NZ. INT Charts may be reprinted by other Member States of the IHO, with minimum of modification. In addition to the Chart's international number, the Chart may bear a national number assigned by the reprinting Member State.

International Charts are maintained by NTM and IHO Member States have undertaken to repeat all Notices affecting International Charts that they reprint. Mariners can therefore use NTMs published by either the originating or reprinting nation to correct these Charts.

Advice on the use of Charts

For voyages within the NZ Area Mariners should ensure that the Charts and publications on board their vessel are adequate for their purposes and up to date according to this Catalogue and NTM Editions. For voyages beyond New Zealand, the appropriate Charts, NTMs and nautical publications produced by the British Admiralty, Royal Australian Navy and SHOM (France) should be used. Charts are an aid to navigation and the degree of dependability must be subject to the judgement of the user.

A source statement is given either in the title of a Chart stating survey authorities with dates, or in a source data diagram showing dates and areas of surveys. For further explanation see the Admiralty Mariner's Handbook (NP 100).

Charts should be used with prudence; there are areas where the source data are old, incomplete or of poor quality. The Mariner should use the largest scale appropriate for their particular purpose; apart from being the most detailed, the larger scales are usually corrected first. When extensive new information (such as a new hydrographic survey) is received, some months may elapse before it can be fully incorporated in published Charts. On small scale Charts of ocean areas where hydrographic information is in many cases still sparse, charted shoals may be in error as regards position, least depth and extent. Undiscovered dangers may exist, particularly away from well-established routes.

Reliance on Charts and Associated Publications

While every effort is made to ensure the accuracy of the information on NZ Charts and other publications, it should be appreciated that the information may not always be complete and up to date. The Mariner must be the final judge of the reliance to be placed on the information given, bearing in mind their particular circumstances, the need for safe and prudent navigation, local pilotage guidance and the judicious use of available navigational aids.

Use of related Publications

A number of related publications are recommended to supplement the use of Charts. In the vicinity of New Zealand these are:

- Symbols and Abbreviations used on Admiralty Paper Charts (Chart 5011)
- New Zealand Pilot (NP 51)
- New Zealand Nautical Almanac (NZ 204)
- New Zealand NTM Edition
- MNZ Marine Ship Notices (for shipmasters)
- MNZ Marine Boat Notices (for fishing vessels and small craft)

For voyages beyond New Zealand, the following British Admiralty publications are recommended:

- Sailing Directions (Pilots)
- List of Lights, Tide Tables and List of Radio Signals (appropriate to the voyage)
- Ocean Passages of the World (NP 136)
- The Mariner's Handbook (NP 100)
- The Nautical Almanac (NP 314)

NZMariner

NZMariner is the product name of the official Raster Navigational Chart (RNC) folio for NZ. It is a digital coloured facsimile of NZ paper navigational charts and can be used in Electronic Charting Systems (ECS) and approved Electronic Chart Display and Information Systems (ECDIS).

NZMariner is available at no cost for users to download from the LINZ website. Notification of the availability of the monthly Update file is promulgated through the fortnightly NTM Edition. For full details refer to the Annual NZ Notices to Mariners No.1 and the LINZ website.

NZ ENCs

ENCs are specifically designed for use in ECDIS onboard ships. As the Hydrographic Authority for NZ, LINZ is responsible for creating and maintaining the official set of ENC for the NZ AREA.

New Zealand ENC cells, prefixed by 'NZ', are available from Chart retailers, through the International Centre for ENCs (IC-ENC) www.ic-enc.org and PRIMAR global distribution network www.primar.org. For more information see the LINZ website.

The release of new LINZ ENC is promulgated through the fortnightly NTM. ENC updates are issued for all Permanent, Temporary and Preliminary NTMs.

LINZ ENC currently available are listed on the LINZ website and also on the IHO website: www.iho.org. For full details refer to the Annual NZ Notices to Mariners No.1.

8

NZ CARRIAGE REQUIREMENTS

Maritime Rules Part 25

Maritime Rules Part 25: Nautical Charts and Publications ensures that New Zealand continues to meet its obligations under Chapter V Regulation 20 (Nautical Publications) and Regulation 21 (International Code of Signals) of the International Convention for the Safety of Life at Sea, 1974 (SOLAS). Part 25 can be viewed at www.maritimenz.govt.nz.

Part 25 sets out the requirements for the carriage of charts and nautical publications on ships. It applies, with certain specified exceptions, to commercial vessels of 12 metres or more in length overall that operate within enclosed water limits and all commercial vessels operating outside the enclosed water limits. Part 25 does not apply to:

- The purchase of any charts for recreational use
- Overseas retailers of New Zealand Charts

Part 25 affects the purchase of Charts, Rule 25.7(2A) states:

(2A) If a paper nautical chart is published by Land Information New Zealand and purchased in New Zealand, that chart will only meet the requirements of this Part if that Chart:

- (a) is certified by Land Information New Zealand as correct up to the date of supply to a chart retailer and is either:*
- (i) certified by a correcting chart retailer as correct up to the time of purchase; or*
 - (ii) purchased from a chart retailer before the publication of corrections in the Notice to Mariners that follows the certification by Land Information New Zealand; and*

(b) is maintained in a fully correct condition.

Chart Retailers

The following is a list of LINZ correcting Chart retailers, approved by LINZ to undertake paper Chart corrections and sell Charts in compliance with Part 25.

Boat Books Ltd.

22 Westhaven Drive
Westhaven
Auckland
Ph: 64-9-358-5691
Fax: 64-9-358-5817
Email: crew@boatbooks.co.nz
www.boatbooks.co.nz

Steve's Marine Supplies Ltd.

18 Cross Road
Sulphur Point
Tauranga
Ph: 64-7-578-9593
Fax: 64-7-577-0758
Email: charts@stevesmarine.co.nz
www.stevesmarine.co.nz

***†Trans Pacific Marine Ltd.**

PO Box 90546, AMSC
121 Beaumont Street
Westhaven
Auckland
Toll free: 0508 242 787
Ph: 64-9-303-1459
Fax: 64-9-307-8170
Email: sales@transpacific.co.nz
www.transpacific.co.nz

* **British Admiralty**

† **Australian Chart Agents**

There are also many more Chart retailers selling paper Charts around New Zealand and several outlets overseas. For the full list see the LINZ website. The purchase of paper Charts in compliance with Maritime Rules Part 25 must be from:

- A Chart Retailer who has approval from LINZ to undertake Chart Corrections, or
- Any LINZ Chart retailer who purchases the Chart from the LINZ Map and Chart Centre and supplies it to the customer before the publication of the next fortnightly NTM Edition. The Chart must be received by the customer while the NTM Edition for which the LINZ Map and Chart Centre updated the Chart is still current.

Introduction

Maritime Safety Information (MSI) is defined as *navigational and meteorological warnings, meteorological forecasts, and other urgent safety-related messages*. This information is of vital importance to all vessels at sea.

Note that communications related to search and rescue operations such as distress alerts, coordination of operations, local communications and positioning signals are **never** MSI, even when (for some shore-to-ship alerts) they use the International SafetyNET service which is used for MSI. Search and rescue operations may, however, involve the broadcasting of MSI in the navigational warning category.

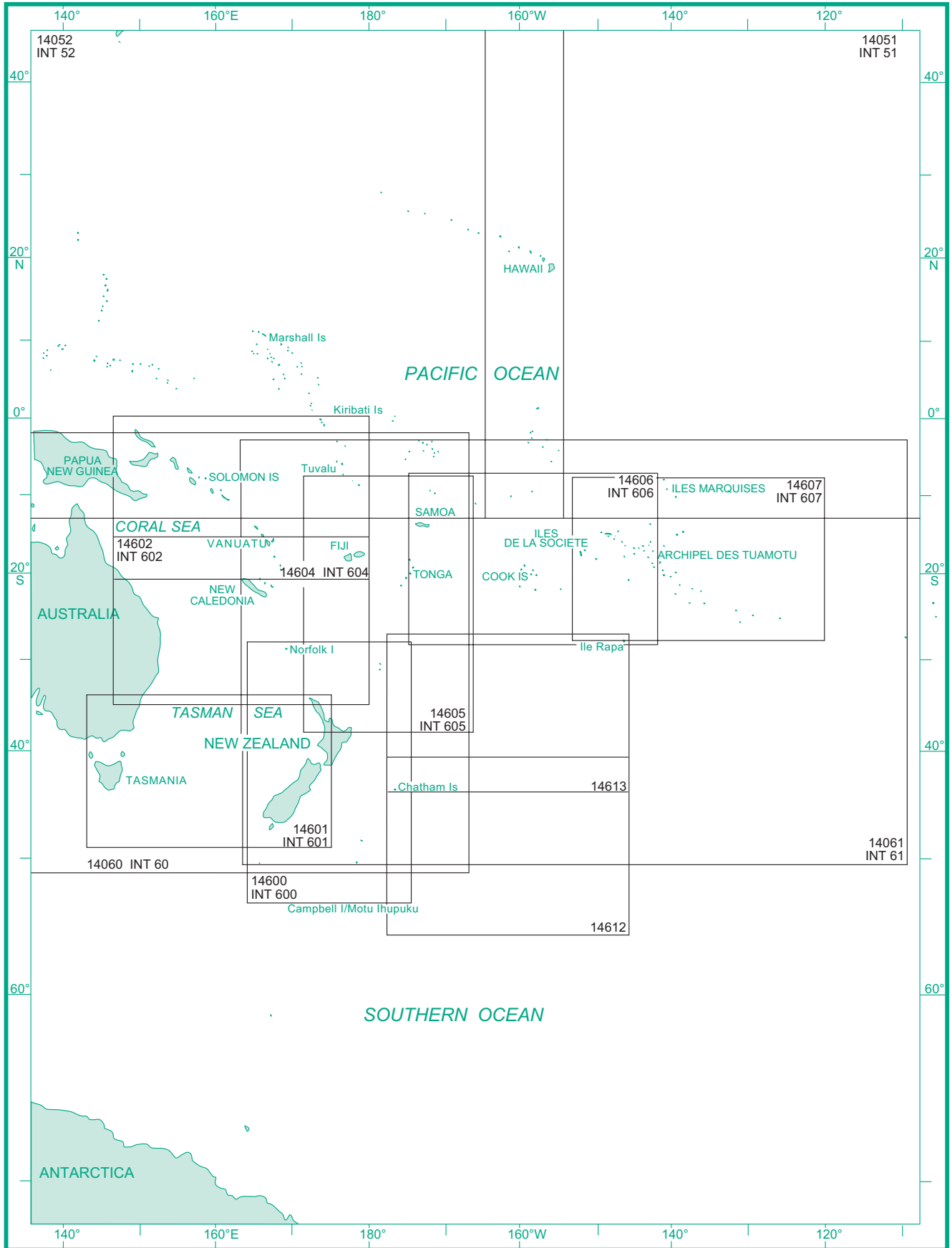
Radio Warnings

The radio navigational warning messages give the Mariner early information of important incidents which may be dangerous to navigation. When Charts are affected the message may serve as a preliminary NTM. Coastal navigational warnings and long range warnings for NAVAREA XIV are issued by Maritime New Zealand (MNZ).

These navigational warnings are broadcast for as long as the information is valid and remain in force until cancelled by the originating authority. Contact can be made by email: rccnz@maritimenz.govt.nz and for full details see Annual NZ Notices to Mariners No.9.

PACIFIC OCEAN

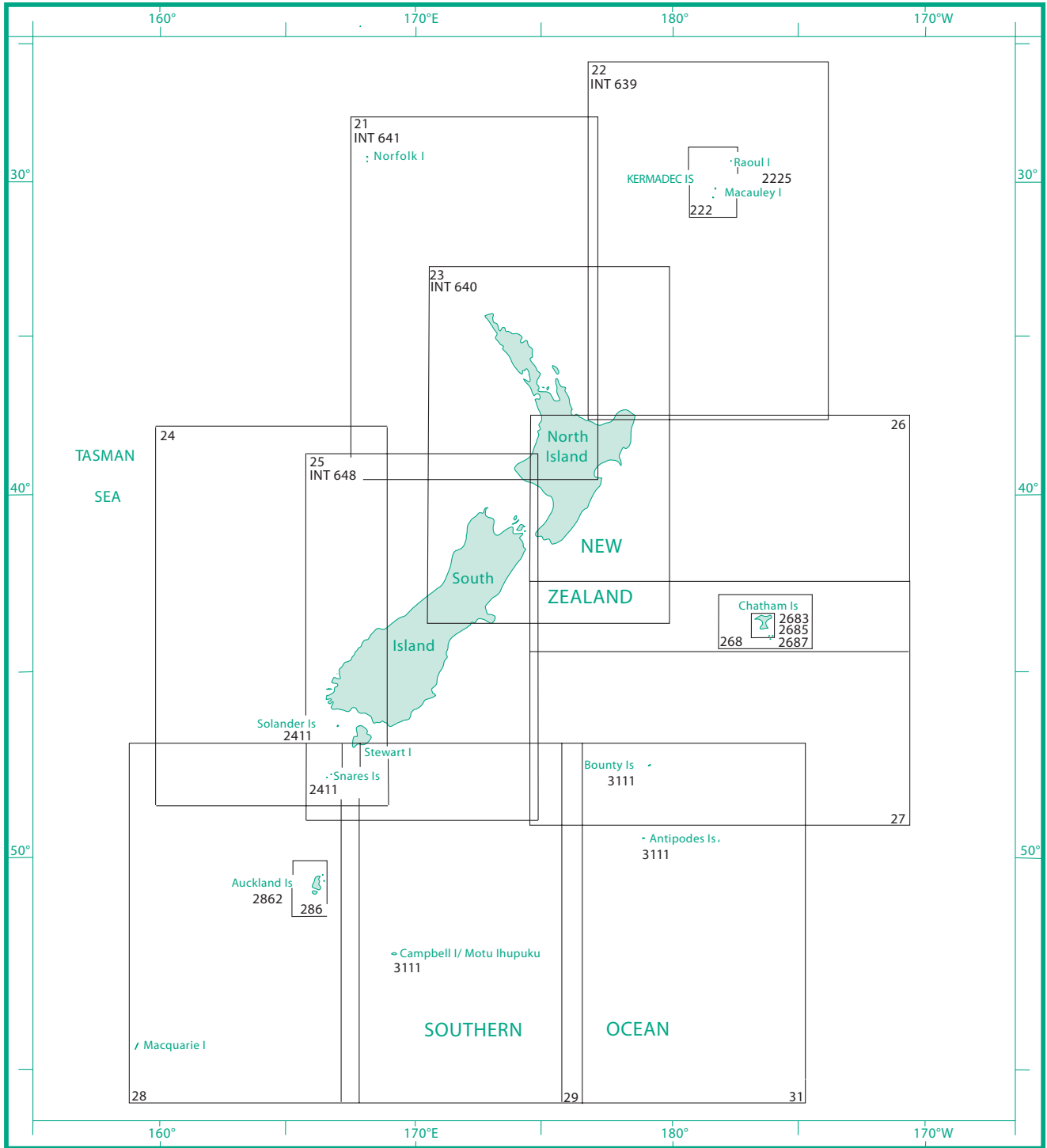
(Small scale planning and passage charts)



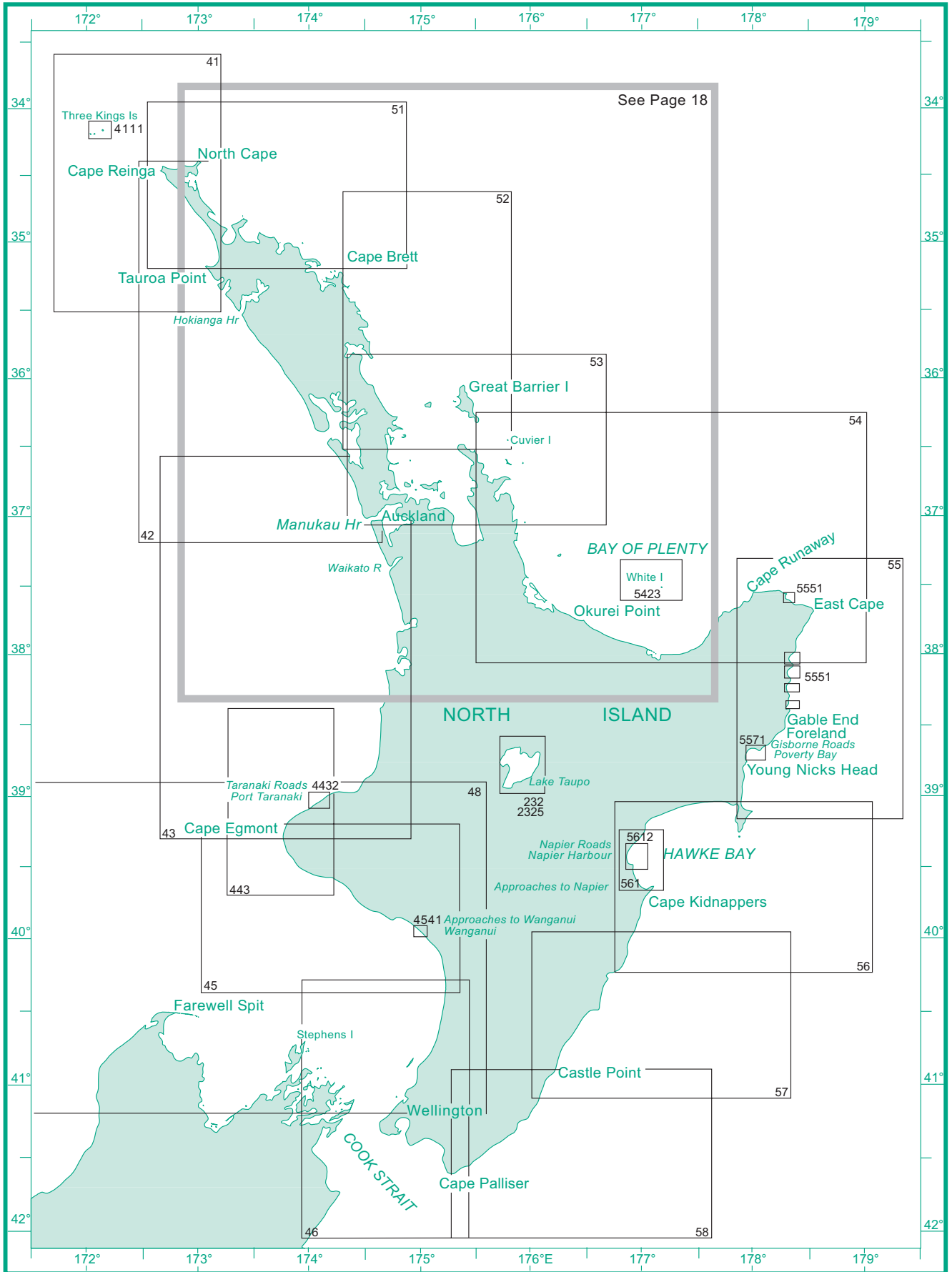
PACIFIC OCEAN

(Small scale planning and passage charts)

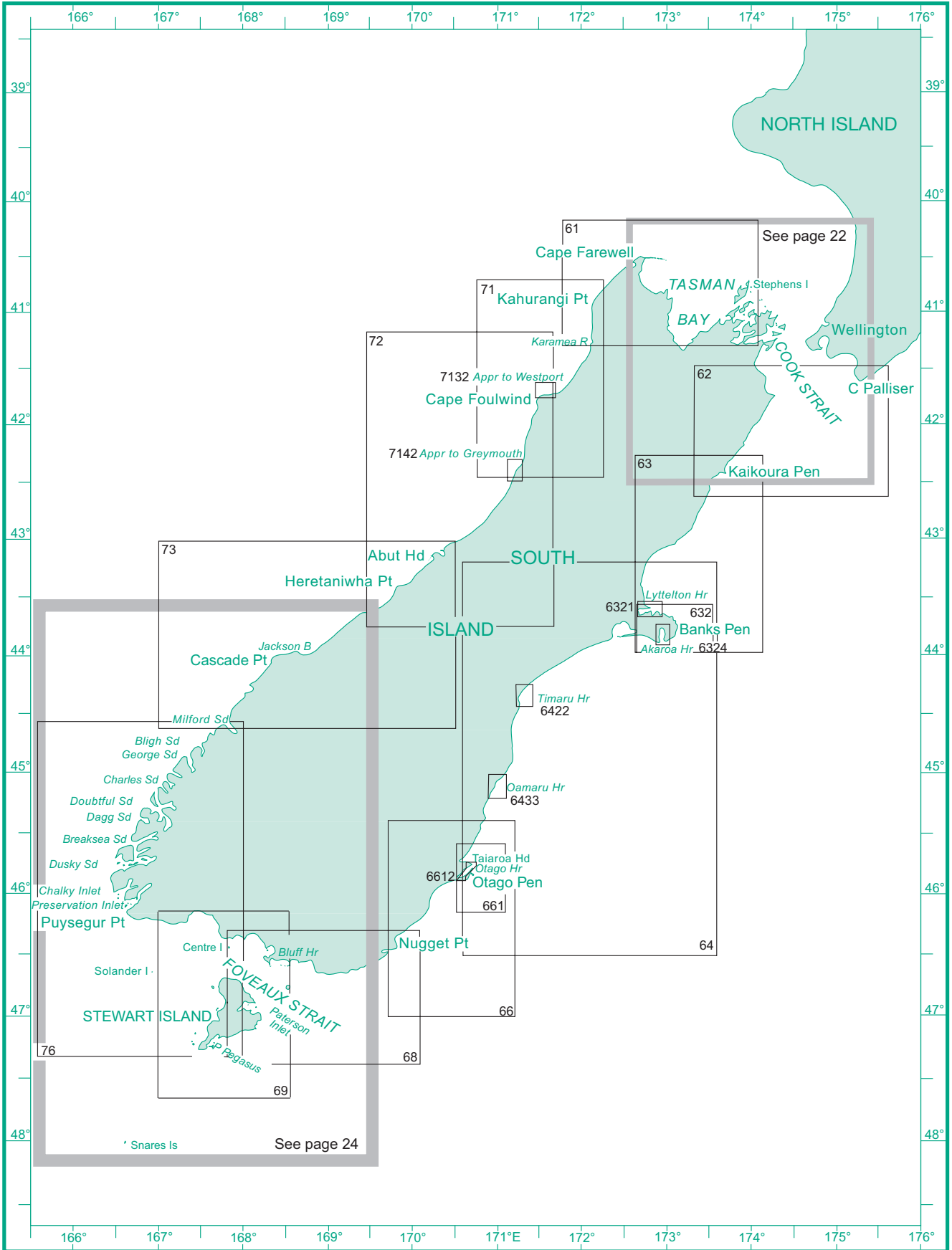
| Chart No. | Title | Scale 1: | Published | New Edition |
|-----------------------------|--|-------------|-----------|----------------|
| International Charts | | | | |
| INT 51 NZ 14051 | North Pacific Ocean (Southeastern Part) ----- | 10 000 000 | 4/1988 | 1/1997 |
| INT 52 NZ 14052 | North Pacific Ocean (Southwestern Part) ----- | 10 000 000 | 7/1987 | 4/1997 |
| INT 60 NZ 14060 | Australasia and adjacent waters ----- | 10 000 000 | 10/1987 | 10/2008 |
| INT 61 NZ 14061 | South Pacific Ocean (Western portion) ----- | 10 000 000 | 1/1986 | 10/2008 |
| INT 600 NZ 14600 | New Zealand including Norfolk Island and Campbell Island / Motu Ihupuku ----- | 3 500 000 | 4/1974 | 7/2007 |
| INT 601 NZ 14601 | Tasman Sea, New Zealand to S.E. Australia ----- | 3 500 000 | 1/1973 | 7/2007 |
| INT 602 NZ 14602 | Tasman and Coral Seas, Australia to Northern New Zealand and Fiji ----- | 3 500 000 | 1/1974 | 7/2007 |
| INT 604 NZ 14604 | Coral and Solomon Seas and adjacent seas ----- | 3 500 000 | 1/1988 | 10/1996 |
| INT 605 NZ 14605 | New Zealand to Fiji and Samoa Islands ----- | 3 500 000 | 3/1976 | 7/2007 |
| INT 606 NZ 14606 | Tonga to Archipel des Tuamotu ----- | 3 500 000 | 10/1977 | 7/2007 |
| INT 607 NZ 14607 | Southeast Polynesia ----- | 3 500 000 | 10/1987 | 4/1997 |
| New Zealand Charts | | | | |
| NZ 14612 | Chatham Islands to Pacific-Antarctic Rise ----- | 3 500 000 | 1/1987 | 4/1999 |
| NZ 14613 | Chatham Islands to Ile Rapa ----- | 3 500 000 | 1/1987 | 4/1999 |



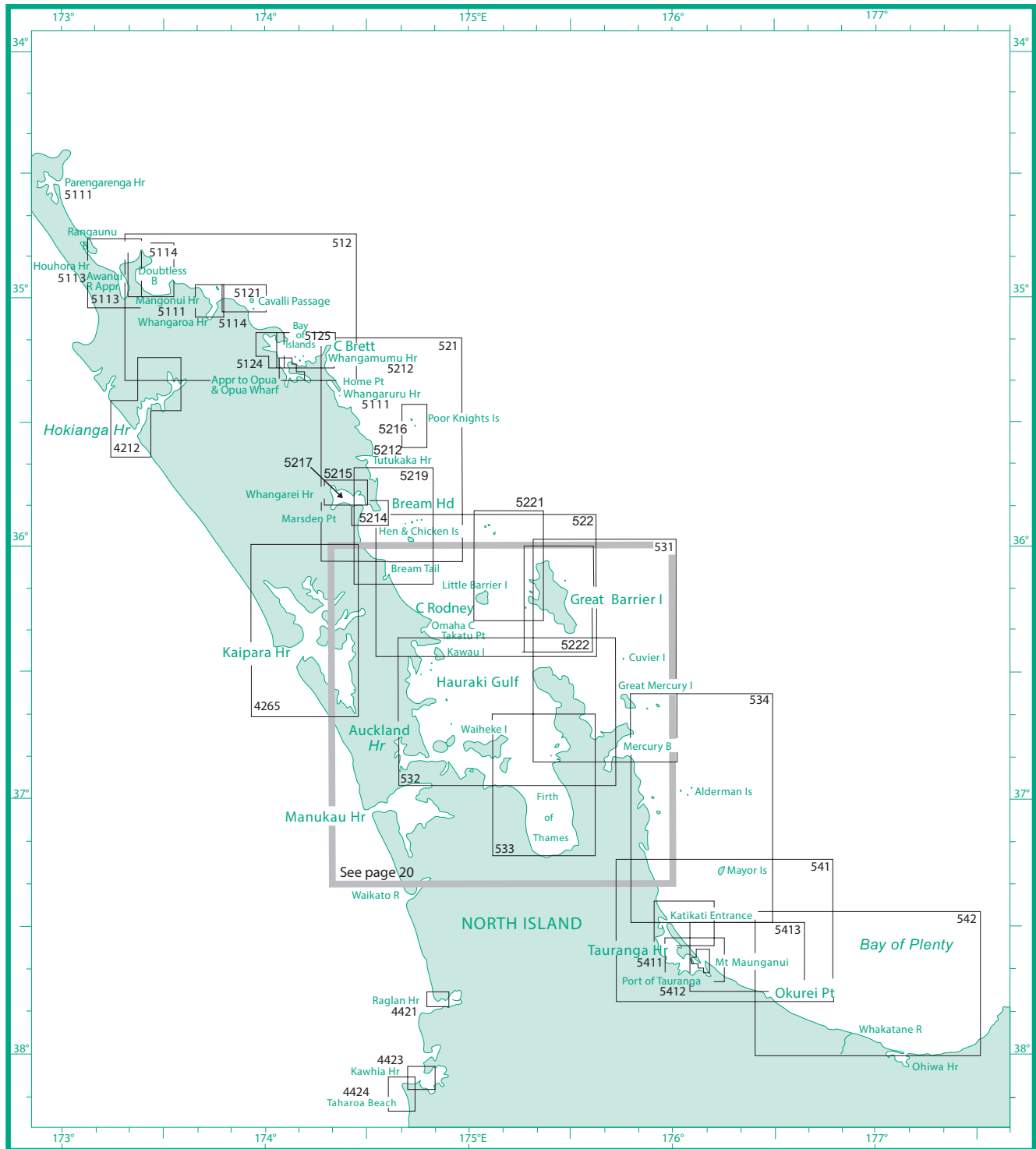
| Chart No. | Title | Scale 1: | Published | New Edition |
|------------------|--|-------------|-----------|----------------|
| INT 641 NZ 21 | Norfolk Island to Cape Egmont----- | 1 500 000 | 4/1992 | 4/2005 |
| INT 639 NZ 22 | Kermadec Islands to East Cape----- | 1 500 000 | 1/1992 | 6/2012 |
| INT 640 NZ 23 | North Island----- | 1 500 000 | 7/1991 | 6/2012 |
| NZ 24 | Western Approaches to South Island----- | 1 250 000 | 7/1980 | 4/2005 |
| INT 648 NZ 25 | South Island----- | 1 500 000 | 4/1991 | 6/2012 |
| NZ 26 | East Cape to Cook Strait including Chatham Islands ----- | 1 250 000 | 10/1979 | 4/2005 |
| NZ 27 | Chatham Islands to Bounty Islands----- | 1 250 000 | 10/1979 | 4/2005 |
| NZ 28 | Stewart Island/Rakiura to Macquarie Island----- | 1 250 000 | 1/1980 | 4/2005 |
| NZ 29 | Stewart Island/Rakiura to Campbell Island/Motu Ihupuku-- | 1 250 000 | 1/1980 | 4/2005 |
| NZ 31 | Bounty and Antipodes Islands and part of the Southern Ocean ----- | 1 250 000 | 4/1980 | 4/2005 |
| NZ 222 | Kermadec Islands ----- | 300 000 | 4/1994 | 2/2018 |
| NZ 268 | Chatham Islands----- | 200 000 | 10/1995 | 6/2018 |
| NZ 286 | Auckland Islands ----- | 150 000 | 4/1992 | 7/2017 |
| NZ 2225 | Plans in the Kermadec Islands ----- | | 4/1994 | 2/2018 |
| | Raoul Island----- | 30 000 | | |
| | Curtis and Cheeseman Islands----- | 30 000 | | |
| | Macauley Island----- | 30 000 | | |
| NZ 2683 | Approaches to Waitangi ----- | 50 000 | 12/2013 | |
| | Ocean Bay ----- | 12 500 | | |
| | Port Hutt----- | 10 000 | | |
| NZ 2685 | Plans in the Chatham Islands----- | | 12/2013 | 8/2018 |
| | Waitangi Bay ----- | 10 000 | | |
| | Kaingaroa Harbour ----- | 10 000 | | |
| | Waitangi Wharf----- | 5 000 | | |
| NZ 2687 | Pitt Strait ----- | 50 000 | 12/2013 | |
| | Owenga----- | 10 000 | | |
| | Flower Pot----- | 10 000 | | |
| NZ 2862 | Plans in the Auckland Islands ----- | | 4/1992 | 7/2017 |
| | Enderby Island to Smith Harbour ----- | 50 000 | | |
| | Smith Harbour to South Cape----- | 50 000 | | |
| NZ 3111 | Campbell Island/Motu Ihupuku, Bounty Islands and the Antipodes Island Group ----- | | 6/2008 | 03/2018 |
| | Campbell Island/Motu Ihupuku----- | 150 000 | | |
| | Perseverance Harbour ----- | 50 000 | | |
| | Bounty Islands ----- | 100 000 | | |
| | Bounty Islands ----- | 25 000 | | |
| | Antipodes Island Group----- | 100 000 | | |
| | Anchorage Bay ----- | 25 000 | | |



| Chart No. | Title | Scale 1: | Published | New Edition |
|-----------|--|--|-----------|----------------|
| NZ 41 | North Cape----- | 200 000 | 10/1972 | 5/2018 |
| NZ 42 | Cape Reinga / Te Rerenga Wairua to Manukau Harbour ---- | 300 000 | 10/1981 | 5/2018 |
| NZ 43 | Manukau Harbour to Cape Egmont----- | 300 000 | 10/1980 | 6/1999 |
| NZ 45 | Cape Egmont to Rangitikei River----- | 200 000 | 1/1989 | 5/2019 |
| NZ 46 | Cook Strait----- | 200 000 | 1/1989 | 5/2017 |
| NZ 48 | Western Approaches to Cook Strait ----- | 400 000 | 4/1998 | 5/2017 |
| NZ 51 | Tauroa Point to Cape Brett ----- | 200 000 | 4/1978 | 5/2017 |
| NZ 52 | Cape Brett to Cuvier Island (Repanga Island)----- | 200 000 | 10/1974 | 5/2017 |
| NZ 53 | Bream Head to Slipper Island including Hauraki ----- Gulf/Tikapa Moana----- | 200 000 | 10/1992 | 5/2017 |
| NZ 54 | Cuvier Island (Repanga Island) to East Cape ----- | 300 000 | 10/1984 | 5/2017 |
| NZ 55 | Cape Runaway to Kahutara Point----- Ranfurly Bank----- | 200 000 70 000 | 4/1998 | 7/2016 |
| NZ 56 | Kahutara Point to Blackhead Point ----- | 200 000 | 10/1989 | 2/2017 |
| NZ 57 | Blackhead Point to Castlepoint ----- Castlepoint Anchorage----- | 200 000 15 000 | 10/1989 | 4/2017 |
| NZ 58 | Castlepoint to Cape Palliser / Matakitaikiakupe----- | 200 000 | 1/1989 | 3/2017 |
| NZ 232 | Lake Taupo (Taupomoana) ----- Horomatangi Reef ----- Tapuaeharuru Bay ----- Waikato River Entrance ----- Lake Taupo----- | 30 000 20 000 5 000 75 000 | 6/2006 | |
| NZ 443 | Approaches to Port Taranaki ----- | 150 000 | 10/1990 | 5/2010 |
| NZ 561 | Approaches to Napier----- | 75 000 | 10/2006 | 12/2016 |
| NZ 2325 | Plans in Lake Taupo (Taupomoana) ----- Western Bay ----- Waihi Bay----- Motuoapa Bay ----- Boat Harbour, Kawakawa Point----- | 40 000 20 000 10 000 5 000 | 6/2006 | |
| NZ 4111 | Manawatāwhi/Three Kings Islands----- North West Bay----- South East Bay ----- | 30 000 6 000 6 000 | 1/2003 | 4/2018 |
| NZ 4432 | Taranaki Roads ----- Port Taranaki ----- | 25 000 8 000 | 1/1994 | 5/2019 |
| NZ 4541 | Approaches to Wanganui ----- Whanganui River, Castlecliff Wharves----- | 15 000 7 500 | 4/1995 | |
| NZ 5423 | Approaches to Whakaari / White Island ----- | 50 000 | 10/1987 | 11/2016 |
| NZ 5551 | Plans on the East Coast ----- Waipiro Bay ----- Tokomaru Bay----- Hicks Bay----- Anaura Bay----- Tolaga Bay----- | 40 000 40 000 40 000 40 000 40 000 | 4/1997 | |
| NZ 5571 | Poverty Bay and Approaches to Gisborne ----- Gisborne Harbour and Entrance ----- | 24 000 7 000 | 6/2008 | 6/2016 |
| NZ 5612 | Napier Roads ----- Napier Harbour ----- | 25 000 7 500 | 10/2006 | 7/2016 |

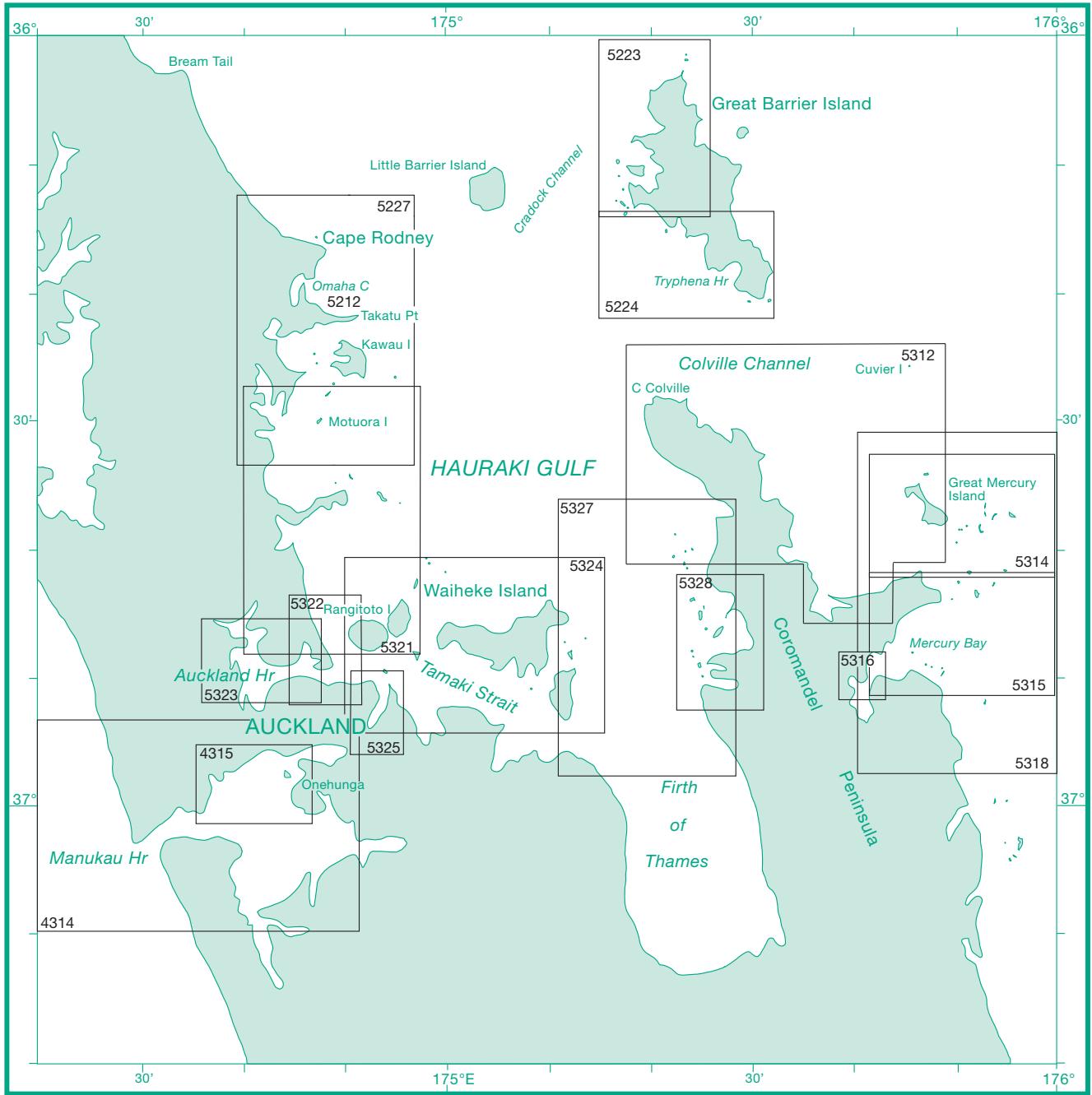


| Chart No. | Title | Scale 1: | Published | New Edition |
|-----------|---|--------------------------|-----------|----------------|
| NZ 61 | Karamea River to Stephens Island (Takapourewa)----- | 200 000 | 10/1984 | 5/2017 |
| NZ 62 | Cape Palliser / Matakaitakiakupe to Kaikoura Peninsula ----- | 200 000 | 4/1998 | 5/2016 |
| NZ 63 | Kaikoura Peninsula to Banks Peninsula ----- | 200 000 | 4/1998 | 5/2016 |
| NZ 64 | Banks Peninsula to Otago Peninsula ----- | 400 000 | 7/1979 | 12/2016 |
| NZ 66 | Katiki Point to Nugget Point ----- | 200 000 | 10/1989 | 11/2016 |
| NZ 68 | Nugget Point to Rarotoka Island ----- | 200 000 | 12/1987 | 6/2016 |
| NZ 69 | Stewart Island/Rakiura ----- | 200 000 | 7/2001 | 7/2016 |
| NZ 71 | Greymouth to Kahurangi Point ----- | 200 000 | 10/1985 | 5/2019 |
| NZ 72 | Cape Foulwind to Heretaniwha Point----- | 300 000 | 7/1984 | 3/2002 |
| NZ 73 | Abut Head to Milford Sound/Piopiotaahi ----- Jackson Bay ----- | 300 000 50 000 | 10/1984 | 5/2019 |
| NZ 76 | Western Approaches to Foveaux Strait----- | 300 000 | 10/1982 | 11/2016 |
| NZ 632 | Banks Peninsula----- | 75 000 | 7/1980 | 4/2016 |
| NZ 661 | Approaches to Otago Harbour ----- | 100 000 | 10/1989 | 7/2016 |
| NZ 6321 | Lyttelton Harbour/Whakaraupō----- Port of Lyttelton----- | 25 000 7 500 | 10/1976 | 4/2016 |
| NZ 6324 | Akaroa Harbour----- French Bay ----- | 30 000 15 000 | 4/2009 | 4/2016 |
| NZ 6422 | Approaches to Timaru ----- Timaru Harbour ----- | 35 000 7 000 | 7/1990 | 6/2016 |
| NZ 6433 | Approaches to Oamaru ----- Oamaru Harbour----- | 36 000 10 000 | 4/2003 | 6/2016 |
| NZ 6612 | Otago Harbour----- Port Chalmers----- Dunedin Wharves----- | 16 000 5 500 8 000 | 1/1985 | 6/2018 |
| NZ 7132 | Approaches to Westport ----- Westport Harbour (North)----- Westport Harbour (South) ----- | 36 000 7 000 7 000 | 7/1988 | 3/2005 |
| NZ 7142 | Greymouth Harbour and Approaches ----- Approaches to Greymouth----- Greymouth Harbour ----- | 30 000 10 000 | 10/1994 | |

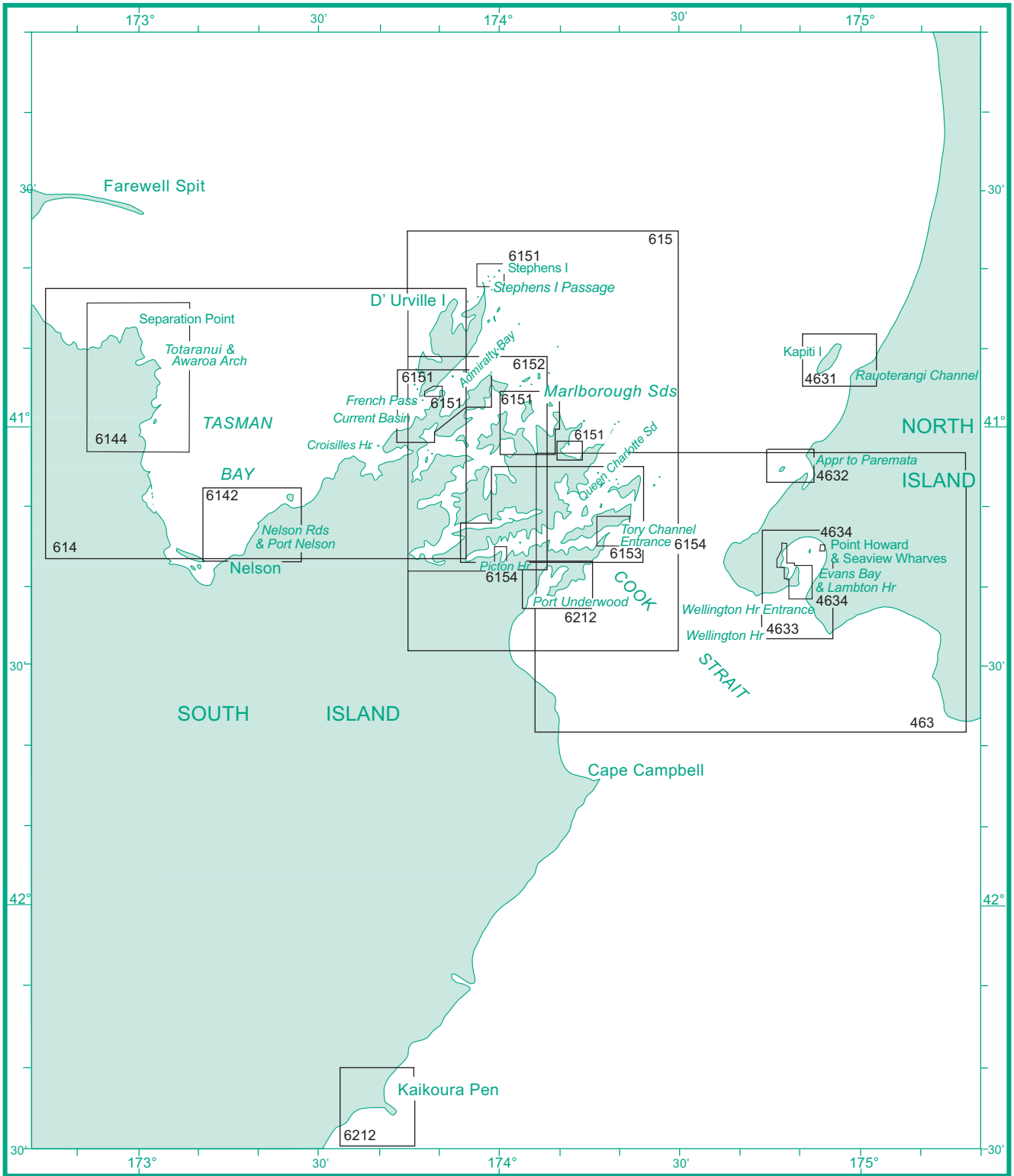


| Chart No. | Title | Scale 1: | Published | New Edition |
|-----------|---|-------------|-----------|----------------|
| NZ 512 | Cape Karikari to Cape Brett ----- | 100 000 | 10/1993 | 5/2017 |
| NZ 521 | Cape Brett to Paepae-o-Tū / Bream Tail ----- | 100 000 | 7/1973 | 12/2016 |
| NZ 522 | Paepae-o-Tū / Bream Tail to Kawau Island including Great Barrier Island (Aotea Island) ----- | 100 000 | 7/1974 | 10/2018 |
| NZ 531 | Great Barrier Island (Aotea Island) to Mercury Bay ----- | 100 000 | 10/1975 | 2/2017 |
| NZ 532 | Approaches to Auckland----- | 100 000 | 10/1975 | 10/2018 |
| NZ 533 | Firth of Thames ----- | 100 000 | 10/1978 | 7/2017 |

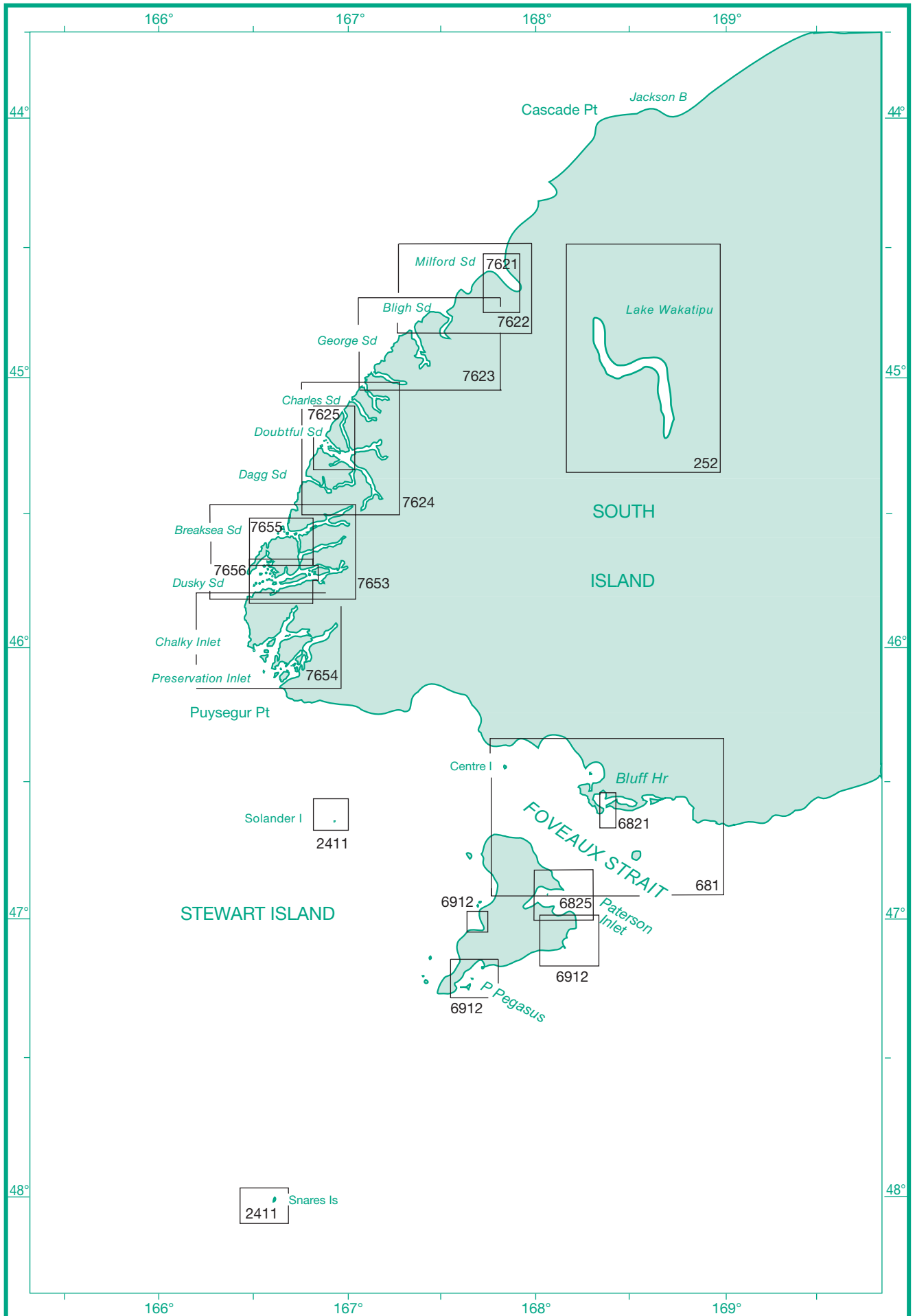
| Chart No. | Title | Scale 1: | Published | New Edition |
|-----------|--|-------------|-----------|----------------|
| NZ 534 | Mercury Bay to Katikati Entrance ----- | 100 000 | 10/1985 | 2/2017 |
| NZ 541 | Mayor Island (Tuhua) to Okurei Point ----- | 100 000 | 3/1976 | 12/2015 |
| NZ 542 | Motiti Island to Pehitairi Point ----- | 100 000 | 4/1997 | 12/2016 |
| | Whakatane River Entrance----- | 7 000 | | |
| | Ohiwa Harbour Entrance----- | 25 000 | | |
| NZ 4212 | Hokianga Harbour ----- | 40 000 | 4/1988 | 1/2018 |
| | Bar and Entrance ----- | 20 000 | | |
| NZ 4265 | Kaipara Harbour ----- | 75 000 | 10/1995 | 4/2018 |
| | Wairoa River (Continuation) ----- | 75 000 | | |
| NZ 4421 | Whaingaroa Harbour and Raglan ----- | 12 500 | 10/1978 | 5/2019 |
| NZ 4423 | Kawhia Harbour ----- | 20 000 | 4/1992 | 7/2001 |
| NZ 4424 | Taharoa Offshore Terminal ----- | 25 000 | 10/1978 | 2/2013 |
| NZ 5111 | Plans Between Parengarenga and Whangaruru ----- | | 10/1977 | 11/2016 |
| | Parengarenga Harbour ----- | 36 000 | | |
| | Mangonui Harbour----- | 9 000 | | |
| | Whangaruru Harbour----- | 25 000 | | |
| NZ 5113 | Plans in Rangaunu Bay ----- | | 4/2009 | 3/2017 |
| | Rangaunu Bay and Awanui River Approaches ----- | 50 000 | | |
| | Awanui River ----- | 20 000 | | |
| | Houhora Harbour ----- | 25 000 | | |
| NZ 5114 | Doubtless Bay and Whangaroa Harbour ----- | | 10/1977 | 3/2017 |
| | Doubtless Bay ----- | 40 000 | | |
| | Whangaroa Harbour and Approaches----- | 25 000 | | |
| NZ 5121 | Cavalli Passage----- | 20 000 | 7/1976 | 3/2018 |
| NZ 5124 | Plans in the Bay of Islands----- | | 7/1994 | 11/2015 |
| | Kerikeri Inlet and Te Puna Inlet ----- | 25 000 | | |
| | Approaches to Opua ----- | 15 000 | | |
| | Opua Wharf ----- | 6 000 | | |
| NZ 5125 | Bay of Islands----- | 25 000 | 7/1994 | 11/2015 |
| | Waitangi ----- | 7 000 | | |
| NZ 5212 | Plans between Whangamumu and Omaha Cove----- | | 10/1982 | 10/2016 |
| | Whangamumu Harbour ----- | 12 000 | | |
| | Tutukaka Harbour----- | 12 000 | | |
| | Omaha Cove ----- | 6 000 | | |
| NZ 5214 | Marsden Point ----- | 18 000 | 7/2004 | 6/2014 |
| NZ 5215 | Whangarei Harbour----- | 18 000 | 7/2004 | 2/2019 |
| | Whangarei Harbour (Continuation to Town Basin) - | 18 000 | | |
| NZ 5216 | Poor Knights Islands, High Peak Rocks and Sugarloaf Rock | 20 000 | 6/2013 | |
| NZ 5217 | Plans in Whangarei Harbour----- | | 12/2018 | |
| | Northport ----- | 7 000 | | |
| | Portland Reach ----- | 8 000 | | |
| | Port Whangarei ----- | 8 000 | | |
| NZ 5219 | Approaches to Marsden Point----- | 50 000 | 4/2010 | 9/2013 |
| NZ 5221 | Cradock Channel and Mokohinau Islands----- | 50 000 | 3/2011 | 7/2017 |
| NZ 5222 | Great Barrier Island (Aotea Island) ----- | 50 000 | 3/2011 | 7/2017 |
| NZ 5411 | Tauranga Harbour, Katikati Entrance to Mount Maunganui - | 40 000 | 10/1993 | 6/2015 |
| NZ 5412 | Port of Tauranga ----- | 10 000 | 1/1992 | 12/2017 |
| | Western Channel (Continuation)----- | 10 000 | | |



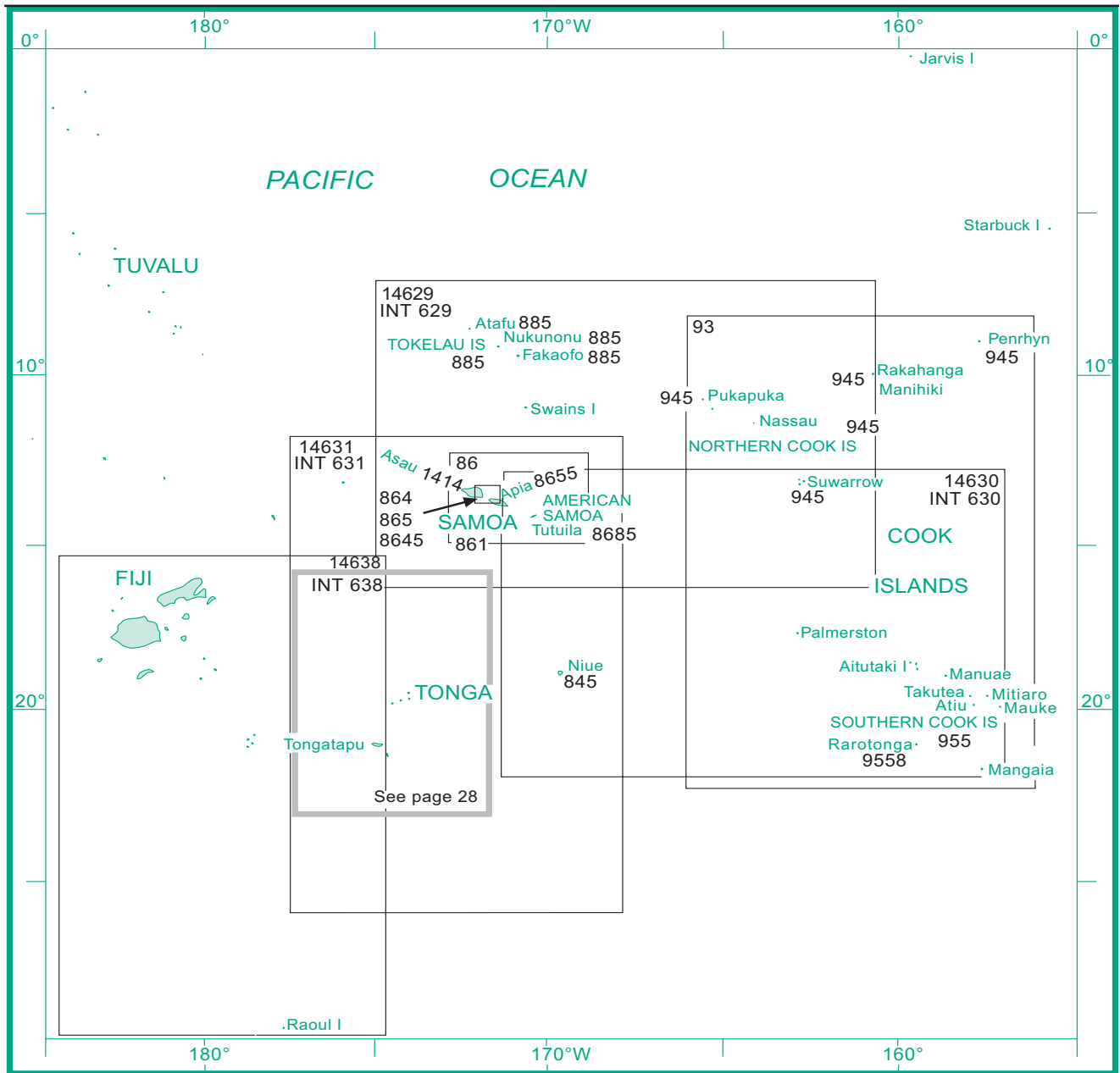
| Chart No. | Title | Scale 1: | Published | New Edition |
|-----------|--|--------------------------|-----------|----------------|
| NZ 4314 | Manukau Harbour ----- LPG Terminal----- | 48 000 3 000 | 10/1982 | 5/2012 |
| NZ 4315 | Approaches to Onehunga ----- Onehunga Wharf ----- | 18 000 2 500 | 10/1982 | 8/2011 |
| NZ 5212 | See page 19 | | | |
| NZ 5223 | Great Barrier Island (Aotea Island) Northwestern Part----- | 25 000 | 10/2010 | 7/2017 |
| NZ 5224 | Great Barrier Island (Aotea Island) Southern Part----- | 25 000 | 10/2010 | 7/2017 |
| NZ 5227 | Te Hāwera-a-Maki / Goat Island to Waiwera River ----- | 40 000 | 4/2008 | 6/2018 |
| NZ 5312 | Cape Colville to Great Mercury Island (Ahuahu) including Cuvier Island (Repanga Island) ----- Whangapoua Harbour ----- | 50 000 50 000 | 11/2015 | |
| NZ 5314 | Mercury Islands----- | 25 000 | 11/2012 | 5/2015 |
| NZ 5315 | Mercury Bay ----- | 25 000 | 6/2014 | |
| NZ 5316 | Whitianga Harbour ----- | 10 000 | 8/2015 | |
| NZ 5318 | Great Mercury Island (Ahuahu) to Otara Bay ----- | 50 000 | 4/1976 | 12/2016 |
| NZ 5321 | Mahurangi Harbour to Rangitoto Island ----- | 40 000 | 4/2008 | 9/2018 |
| NZ 5322 | Auckland Harbour East ----- Calliope Wharves ----- Commerical Harbour ----- | 18 000 5 000 7 500 | 4/2008 | 9/2018 |
| NZ 5323 | Auckland Harbour West----- Kauri Point Wharf ----- Chelsea Wharf ----- | 18 000 7 500 7 500 | 4/2008 | 6/2012 |
| NZ 5324 | Tamaki Strait and Approaches including Waiheke Island --- | 40 000 | 7/1977 | 9/2018 |
| NZ 5325 | Tamaki River ----- | 12 000 | 7/1994 | 9/2018 |
| NZ 5327 | Waiheke Island to Coromandel Peninsula----- | 40 000 | 3/2005 | 9/2018 |
| NZ 5328 | Coromandel Harbour----- | 20 000 | 3/2005 | 7/2017 |



| Chart No. | Title | Scale 1: | Published | New Edition |
|-----------|---|--|-----------|----------------|
| NZ 463 | Approaches to Wellington ----- | 100 000 | 7/1986 | 3/2015 |
| NZ 614 | Tasman Bay / Te Tai-o-Aorere ----- Port Motueka----- Mapua ----- | 100 000 20 000 20 000 | 7/1989 | 9/2015 |
| NZ 615 | Marlborough Sounds----- | 100 000 | 4/1992 | 3/2011 |
| NZ 4631 | Rauoterangi Channel and Kapiti Island----- | 27 000 | 1/1983 | 12/2016 |
| NZ 4632 | Approaches to Porirua Harbour ----- | 16 000 | 4/1982 | 7/2000 |
| NZ 4633 | Wellington Harbour----- | 25 000 | 1/1987 | 12/2014 |
| NZ 4634 | Wellington Harbour Entrance and Plans of Wharves ----- Entrance to Wellington Harbour----- Evans Bay ----- Lambton Harbour----- Point Howard and Seaview Wharves ----- | 12 500 7 000 7 000 7 000 | 1/1987 | 12/2014 |
| NZ 6142 | Nelson Harbour and Entrance----- Port Nelson----- | 36 000 6 000 | 1/1988 | 7/2015 |
| NZ 6144 | Abel Tasman ----- Port Golden Bay (Tarakohe) ----- | 35 000 10 000 | 4/2009 | |
| NZ 6151 | Plans in the Marlborough Sounds----- Approaches to Te Aumiti / French Pass ----- Te Aumiti / French Pass ----- Forsyth and Guards Bays----- Te Anamāhanga / Port Gore ----- Stephens Passage ----- | 35 000 10 000 30 000 30 000 30 000 | 1/1993 | 3/2018 |
| NZ 6152 | Pelorous Sound / Te Hoiere and Havelock ----- Havelock----- | 50 000 15 000 | 4/1998 | 4/2018 |
| NZ 6153 | Queen Charlotte Sound / Tōtaranui----- | 36 000 | 1/1987 | 4/2019 |
| NZ 6154 | Tory Channel Entrance and Picton Harbour----- Tory Channel Entrance ----- Picton Harbour----- Picton Wharves ----- | 11 000 10 000 3 000 | 1/1987 | 1/2019 |
| NZ 6212 | Plans on the North East Coast of South Island ----- Te Whanganui / Port Underwood ----- Kaikoura Peninsula ----- Ingles Bay ----- South Bay ----- | 35 000 30 000 10 000 10 000 | 5/1999 | 3/2019 |



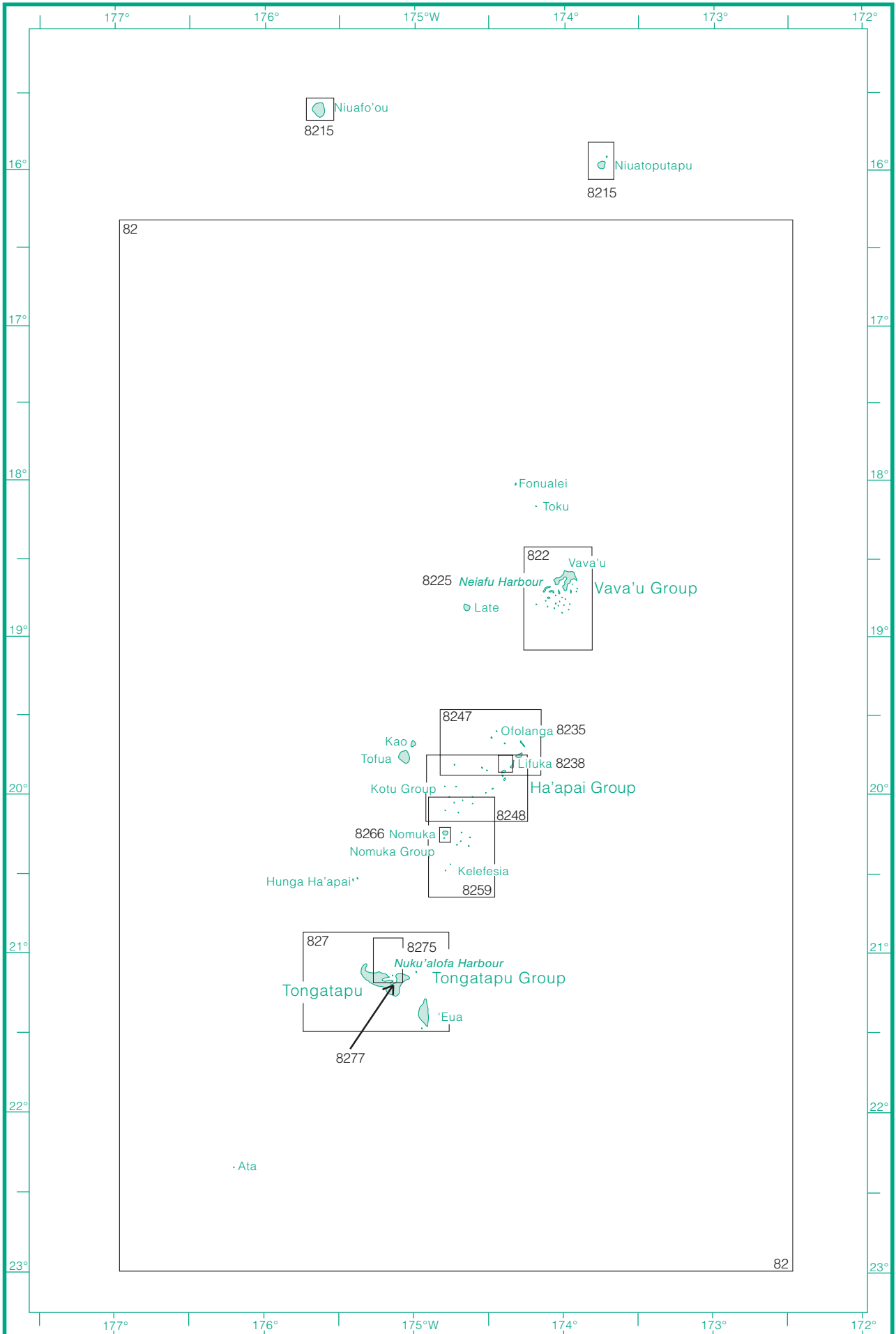
| Chart No. | Title | Scale 1: | Published | New Edition |
|-----------|---|--------------------------------------|-----------|----------------|
| NZ 252 | Lake Wakatipu ----- Queenstown Bay to Picnic Point ----- Frankton Arm to Queenstown Bay ----- Queenstown Bay ----- | 100 000 50 000 20 000 5 000 | 10/2006 | |
| NZ 681 | Approaches to Bluff and Riverton/Aparima ----- Riverton/Aparima ----- | 100 000 40 000 | 10/1987 | 6/2016 |
| NZ 2411 | Snares Islands/Tini Heke and Solander Island (Hautere) ---- Snares Islands/Tini Heke ----- Solander Island (Hautere) ----- Ho Ho Bay ----- | 30 000 30 000 7 500 | 7/2000 | 2/2018 |
| NZ 6821 | Bluff Harbour and Entrance ----- Port of Bluff ----- | 12 000 7 000 | 10/1985 | 7/2017 |
| NZ 6825 | Paterson Inlet / Whaka a Te Wera ----- Paterson Inlet / Whaka a Te Wera ----- Horseshoe Bay to Ulva Island ----- Continuation West to Prices Inlet ----- | 40 000 15 000 15 000 | 3/2011 | 7/2017 |
| NZ 6912 | Plans in Stewart Island/Rakiura ----- Port Adventure and Lords River/Tūtaekawetoweto Port Pegasus/Pikihatiti ----- Easy Harbour ----- | 40 000 40 000 40 000 | 7/2001 | 7/2017 |
| NZ 7621 | Milford Sound / Piopiotahi ----- Deep Water Basin and Fresh Water Basin ----- | 25 000 10 000 | 8/2009 | |
| NZ 7622 | Milford Sound / Piopiotahi to Sutherland Sound ----- | 60 000 | 4/1998 | 5/2016 |
| NZ 7623 | Bligh Sound to Caswell Sound ----- | 60 000 | 4/1999 | |
| NZ 7624 | Charles Sound to Dagg Sound ----- Deep Cove ----- | 60 000 10 000 | 4/1999 | 8/2009 |
| NZ 7625 | Thompson Sound and Doubtful Sound/Patea ----- Neck Cove and Deas Cove ----- Patea Passage (Gaol Passage) ----- | 25 000 7 500 10 000 | 8/2009 | |
| NZ 7653 | Breaksea Sound and Dusky Sound ----- | 60 000 | 1/1997 | 8/2009 |
| NZ 7654 | Chalky and Preservation Inlets ----- North Port ----- South Port ----- | 60 000 25 000 25 000 | 1/1997 | 7/2016 |
| NZ 7655 | Breaksea Sound ----- | 25 000 | 8/2009 | |
| NZ 7656 | Dusky Sound ----- Continuation of Dusky Sound ----- | 25 000 25 000 | 8/2009 | |



| Chart No. | Title | Scale 1: | Published | New Edition |
|-----------|-------------------|-------------|-----------|----------------|
| NZ 86 | Samoa Islands | 500 000 | 6/2010 | |
| NZ 93 | Cook Islands | 1 500 000 | 4/1995 | 10/1997 |
| NZ 845 | Niue | 150 000 | 4/2009 | |
| | Alofi Anchorage | 6 000 | | |
| * NZ 861 | Plans in Samoa | | 6/2010 | |
| | Fagaloa Bay | 25 000 | | |
| | Safata Harbour | 27 920 | | |
| | Faleaupo Road | 25 000 | | |
| | Satupa'itea Road | 50 000 | | |
| | Falealili Harbour | 33 300 | | |
| | Uafato Bay | 12 260 | | |
| | Saluafata Harbour | 25 000 | | |
| | Vailele Bay | 20 050 | | |
| | Falefa Harbour | 39 030 | | |
| | Sala'ilua Bay | 50 000 | | |
| | Fagali'i Bay | 24 270 | | |
| NZ 864 | Apolima Strait | 50 000 | 6/2010 | 3/2018 |
| | Matautu Bay | 50 000 | | |

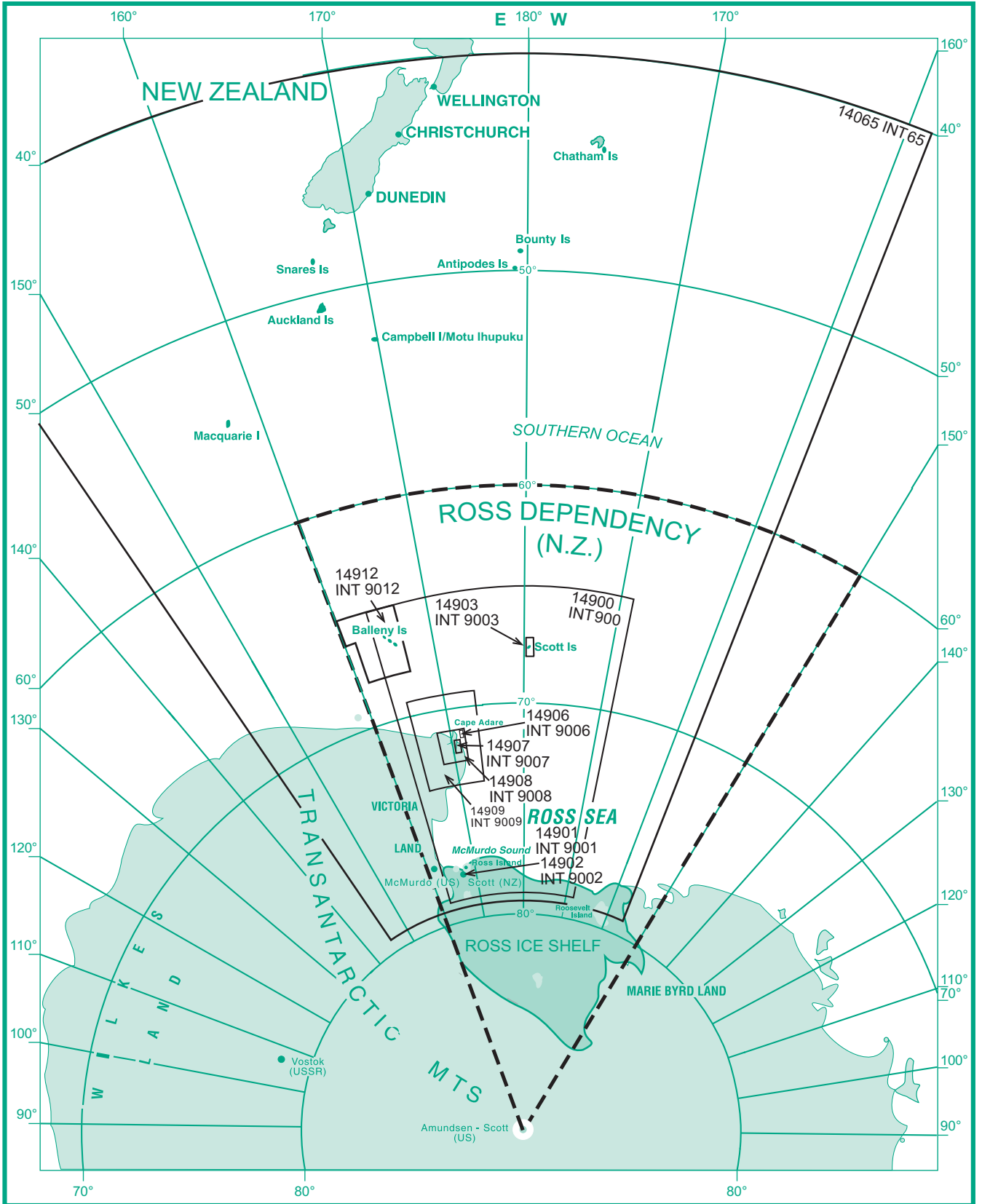
| Chart No. | Title | Scale 1: | Published | New Edition |
|---------------------|--|-------------|-----------|----------------|
| NZ 865 | Approaches to Apia ----- | 50 000 | 6/2010 | 3/2018 |
| NZ 885 | Tokelau ----- | 500 000 | 1/1997 | 3/2019 |
| | Atafu ----- | 100 000 | | |
| | Nukunonu ----- | 100 000 | | |
| | Fakaofu ----- | 100 000 | | |
| NZ 945 | Plans of the Cook Islands - Northern Sheet----- | | 10/1995 | 1/2019 |
| | Pukapuka----- | 100 000 | | |
| | Nassau----- | 75 000 | | |
| | Suwarrow----- | 100 000 | | |
| | Suwarrow Lagoon Entrance----- | 25 000 | | |
| | Manihiki ----- | 75 000 | | |
| | Rakahanga ----- | 50 000 | | |
| | Penrhyn ----- | 75 000 | | |
| | Taruia Passage to Gudgeon Bay----- | 12 500 | | |
| | Taruia Passage----- | 6 000 | | |
| NZ 955 | Plans of the Cook Islands - Southern Sheet ----- | | 10/1993 | 3/2019 |
| | Aitutaki----- | 60 000 | | |
| | Arutanga Anchorage ----- | 15 000 | | |
| | Palmerston ----- | 75 000 | | |
| | Mitiaro----- | 75 000 | | |
| | Mauke ----- | 75 000 | | |
| | Manuae ----- | 75 000 | | |
| | Takutea ----- | 75 000 | | |
| | Atiu----- | 75 000 | | |
| | Mangaia ----- | 75 000 | | |
| * NZ 1414 | Asau Harbour ----- | 10 000 | 10/1980 | |
| NZ 8645 | Plans in Apolima Strait ----- | | 6/2010 | 3/2018 |
| | Salelologa Harbour ----- | 10 000 | | |
| | Mulifanua Harbour----- | 10 000 | | |
| NZ 8655 | Apia Harbour----- | 7 500 | 7/2007 | 3/2018 |
| * NZ 8685 | Islands in American Samoa----- | | 10/1993 | |
| | Pago Pago Harbour ----- | 25 000 | | |
| | Swains Island ----- | 50 000 | | |
| | Tutuila Island ----- | 60 000 | | |
| | Manua Islands ----- | 100 000 | | |
| | Rose Atoll----- | 100 000 | | |
| NZ 9558 | Rarotonga ----- | 40 000 | 10/1992 | 6/2018 |
| | Approaches to Avatiu & Avarua Harbours----- | 9 000 | | |
| | Avatiu Harbour ----- | 3 000 | | |
| | Arorangi Reef Passage----- | 2 000 | | |
| INT 629 NZ 14629 | Samoa Islands to Northern Cook Islands and Tokelau ----- | 1 500 000 | 4/1993 | 4/1997 |
| INT 630 NZ 14630 | Samoa Islands to Southern Cook Islands ----- | 1 500 000 | 4/1993 | 4/1997 |
| INT 631 NZ 14631 | Samoa Islands to Tonga including Niue ----- | 1 500 000 | 4/1993 | 4/1997 |
| INT 638 NZ 14638 | Fiji to Kermadec Islands including Tongatapu ----- | 1 500 000 | 10/1987 | 10/1996 |

* Fathom Chart - Not available in NZMariner



| Chart No. | Title | Scale 1: | Published | New Edition |
|---------------------|--|-------------|-----------|----------------|
| T 82 NZ 82 | Tonga ----- | 750 000 | 10/1993 | |
| T 822 NZ 822 | Vava'u Group ----- | 50 000 | 5/2010 | 4/2019 |
| T 827 NZ 827 | Approaches to Tongatapu including 'Eua ----- | 100 000 | 10/1998 | 5/2019 |
| T 8215 NZ 8215 | Niuatoputapu Group and Niuafu'ou----- | | 1/1996 | 1/2019 |
| | Niuatoputapu and Tafahi ----- | 100 000 | | |
| | Niuafu'ou ----- | 100 000 | | |
| | Niuatoputapu Harbour ----- | 9 000 | | |
| | Niuatoputapu Harbour Entrance ----- | 3 000 | | |
| T 8225 NZ 8225 | Neiafu Harbour ----- | 10 000 | 5/2010 | 1/2019 |
| * T 8235 NZ 8235 | Anchorage in the Friendly Islands ----- | | 10/1993 | |
| | Ofolanga Island and Anchorage----- | 12 100 | | |
| T 8238 NZ 8238 | Approaches to Lifuka ----- | 15 000 | 4/2005 | |
| | Ava Limu Moto Entrance----- | 8 000 | | |
| * T 8247 NZ 8247 | Ha'apai Group - northern portion ----- | 72 600 | 10/1993 | |
| * T 8248 NZ 8248 | Ha'apai Group - southern portion ----- | 72 600 | 10/1993 | |
| * T 8259 NZ 8259 | Nomuka Group ----- | 72 600 | 7/1993 | |
| * T 8266 NZ 8266 | Anchorage in Tonga----- | | 7/1993 | |
| | Nomuka Harbour ----- | 18 150 | | |
| T 8275 NZ 8275 | Approaches to Nuku'alofa Harbour ----- | 30 000 | 7/1997 | 4/2019 |
| T 8277 NZ 8277 | Nuku'alofa Harbour----- | 10 000 | 4/2010 | 1/2019 |

* Fathom Chart - Not available in NZMariner



| Chart No. | Title | Scale 1: | Published | New Edition |
|----------------------|---|--|-----------|----------------|
| INT 65 NZ 14065 | Ross Sea to New Zealand ----- | 10 000 000 | 10/1994 | 1/1997 |
| INT 900 NZ 14900 | Ross Sea ----- | 2 000 000 | 4/1998 | |
| INT 9001 NZ 14901 | Cape Royds to Pram Point ----- | 60 000 | 7/2007 | |
| INT 9002 NZ 14902 | McMurdo Station and Scott Base----- | 5 000 | 7/2007 | |
| INT 9003 NZ 14903 | Approaches to Scott Island----- Scott Island----- | 75 000 25 000 | 8/2008 | |
| INT 9006 NZ 14906 | Cape Adare and Cape Hallett ----- Ridley Beach ----- Seabee Hook ----- Cape Adare ----- Cape Hallett----- | 15 000 15 000 50 000 50 000 | 1/2003 | 8/2006 |
| INT 9007 NZ 14907 | Possession Islands ----- | 60 000 | 1/2003 | 8/2006 |
| INT 9008 NZ 14908 | Cape Adare to Cape Daniell ----- | 200 000 | 1/2003 | 8/2006 |
| INT 9009 NZ 14909 | Cape Hooker to Coulman Island ----- | 500 000 | 6/2004 | |
| INT 9012 NZ 14912 | Balleny Islands----- Balleny Seamount (Continuation) ----- | 300 000 300 000 | 8/2006 | |

NUMERICAL CHART LIST

New Zealand Charts

| Chart No. | Scale 1: | Page | Chart No. | Scale 1: | Page |
|-----------|-------------|------|-----------|-------------|------|
| INT 641 | 1 500 000 | 13 | NZ 542 | 100 000 | 19 |
| NZ 21 | | | NZ 561 | 75 000 | 15 |
| INT 639 | 1 500 000 | 13 | NZ 614 | 100 000 | 23 |
| NZ 22 | | | NZ 615 | 100 000 | 23 |
| INT 640 | 1 500 000 | 13 | NZ 632 | 75 000 | 17 |
| NZ 23 | | | NZ 661 | 100 000 | 17 |
| NZ 24 | 1 250 000 | 13 | NZ 681 | 100 000 | 25 |
| INT 648 | 1 500 000 | 13 | T/NZ 822 | 50 000 | 29 |
| NZ 25 | | | T/NZ 827 | 100 000 | 29 |
| NZ 26 | 1 250 000 | 13 | NZ 845 | 150 000 | 26 |
| NZ 27 | 1 250 000 | 13 | NZ 861 | 50 000 | 26 |
| NZ 28 | 1 250 000 | 13 | NZ 864 | 50 000 | 26 |
| NZ 29 | 1 250 000 | 13 | NZ 865 | 50 000 | 27 |
| NZ 31 | 1 250 000 | 13 | NZ 885 | 500 000 | 27 |
| NZ 41 | 200 000 | 15 | NZ 945 | Various | 27 |
| NZ 42 | 300 000 | 15 | NZ 955 | Various | 27 |
| NZ 43 | 300 000 | 15 | NZ 1414 | 10 000 | 27 |
| NZ 45 | 200 000 | 15 | NZ 2225 | 30 000 | 13 |
| NZ 46 | 200 000 | 15 | NZ 2325 | Various | 15 |
| NZ 48 | 400 000 | 15 | NZ 2411 | Various | 25 |
| NZ 51 | 200 000 | 15 | NZ 2683 | Various | 13 |
| NZ 52 | 200 000 | 15 | NZ 2685 | Various | 13 |
| NZ 53 | 200 000 | 15 | NZ 2687 | Various | 13 |
| NZ 54 | 300 000 | 15 | NZ 2862 | 50 000 | 13 |
| NZ 55 | 200 000 | 15 | NZ 3111 | Various | 13 |
| NZ 56 | 200 000 | 15 | NZ 4111 | 30 000 | 15 |
| NZ 57 | 200 000 | 15 | NZ 4212 | 40 000 | 19 |
| NZ 58 | 200 000 | 15 | NZ 4265 | 75 000 | 19 |
| NZ 61 | 200 000 | 17 | NZ 4314 | 48 000 | 21 |
| NZ 62 | 200 000 | 17 | NZ 4315 | 18 000 | 21 |
| NZ 63 | 200 000 | 17 | NZ 4421 | 12 500 | 19 |
| NZ 64 | 400 000 | 17 | NZ 4423 | 20 000 | 19 |
| NZ 66 | 200 000 | 17 | NZ 4424 | 25 000 | 19 |
| NZ 68 | 200 000 | 17 | NZ 4432 | 25 000 | 15 |
| NZ 69 | 200 000 | 17 | NZ 4541 | 15 000 | 15 |
| NZ 71 | 200 000 | 17 | NZ 4631 | 27 000 | 23 |
| NZ 72 | 300 000 | 17 | NZ 4632 | 16 000 | 23 |
| NZ 73 | 300 000 | 17 | NZ 4633 | 25 000 | 23 |
| NZ 76 | 300 000 | 17 | NZ 4634 | Various | 23 |
| T/NZ 82 | 750 000 | 29 | NZ 5111 | Various | 19 |
| NZ 86 | 500 000 | 26 | NZ 5113 | 50 000 | 19 |
| NZ 93 | 1 500 000 | 26 | NZ 5114 | Various | 19 |
| NZ 222 | 300 000 | 13 | NZ 5121 | 20 000 | 19 |
| NZ 232 | Various | 15 | NZ 5124 | Various | 19 |
| NZ 252 | 100 000 | 25 | NZ 5125 | Various | 19 |
| NZ 268 | 200 000 | 13 | NZ 5212 | Various | 19 |
| NZ 286 | 150 000 | 13 | NZ 5214 | 18 000 | 19 |
| NZ 443 | 150 000 | 15 | NZ 5215 | 18 000 | 19 |
| NZ 463 | 100 000 | 23 | NZ 5216 | 20 000 | 19 |
| NZ 512 | 100 000 | 18 | NZ 5217 | Various | 19 |
| NZ 521 | 100 000 | 18 | NZ 5219 | 50 000 | 19 |
| NZ 522 | 100 000 | 18 | NZ 5221 | 50 000 | 19 |
| NZ 531 | 100 000 | 18 | NZ 5222 | 50 000 | 19 |
| NZ 532 | 100 000 | 18 | NZ 5223 | 25 000 | 21 |
| NZ 533 | 100 000 | 18 | NZ 5224 | 25 000 | 21 |
| NZ 534 | 100 000 | 19 | NZ 5227 | 40 000 | 21 |
| NZ 541 | 100 000 | 19 | NZ 5312 | 50 000 | 21 |
| | | | NZ 5314 | 25 000 | 21 |

Small Scale
International Charts

| Chart No. | Scale 1: | Page | Chart No. | Scale 1: | Page |
|-----------|-------------|------|-----------|-------------|------|
| NZ 5315 | 25 000 | 21 | INT 51 | 10 000 000 | 11 |
| NZ 5316 | 10 000 | 21 | NZ 14051 | | |
| NZ 5318 | 50 000 | 21 | INT 52 | 10 000 000 | 11 |
| NZ 5321 | 40 000 | 21 | NZ 14052 | | |
| NZ 5322 | 18 000 | 21 | INT 60 | 10 000 000 | 11 |
| NZ 5323 | 18 000 | 21 | NZ 14060 | | |
| NZ 5324 | 40 000 | 21 | INT 61 | 10 000 000 | 11 |
| NZ 5325 | 12 000 | 21 | NZ 14061 | | |
| NZ 5327 | 40 000 | 21 | INT 65 | 3 500 000 | 31 |
| NZ 5328 | 20 000 | 19 | NZ 14065 | | |
| NZ 5411 | 40 000 | 19 | INT 600 | 3 500 000 | 11 |
| NZ 5412 | 10 000 | 19 | NZ 14600 | | |
| NZ 5413 | 50 000 | 15 | INT 601 | 3 500 000 | 11 |
| NZ 5423 | 50 000 | 15 | NZ 14601 | | |
| NZ 5551 | 40 000 | 15 | INT 602 | 3 500 000 | 11 |
| NZ 5571 | 24 000 | 15 | NZ 14602 | | |
| NZ 5612 | 25 000 | 23 | INT 604 | 3 500 000 | 11 |
| NZ 6142 | 36 000 | 23 | NZ 14604 | | |
| NZ 6144 | 35 000 | 23 | INT 605 | 3 500 000 | 11 |
| NZ 6151 | Various | 23 | NZ 14605 | | |
| NZ 6152 | 50 000 | 23 | INT 606 | 3 500 000 | 11 |
| NZ 6153 | 36 000 | 23 | NZ 14606 | | |
| NZ 6154 | Various | 23 | INT 607 | 3 500 000 | 11 |
| NZ 6212 | Various | 17 | NZ 14607 | | |
| NZ 6321 | 25 000 | 17 | NZ 14612 | 3 500 000 | 11 |
| NZ 6324 | 30 000 | 17 | NZ 14613 | 3 500 000 | 11 |
| NZ 6422 | 35 000 | 17 | INT 629 | 1 500 000 | 11 |
| NZ 6433 | 36 000 | 17 | NZ 14629 | | 27 |
| NZ 6612 | 16 000 | 25 | INT 630 | 1 500 000 | |
| NZ 6821 | 12 000 | 25 | NZ 14630 | | 27 |
| NZ 6825 | 40 000 | 25 | INT 631 | 1 500 000 | |
| NZ 6912 | 40 000 | 17 | NZ 14631 | | 27 |
| NZ 7132 | 36 000 | 17 | INT 638 | 1 500 000 | |
| NZ 7142 | Various | 25 | NZ 14638 | | 27 |
| NZ 7621 | 25 000 | 25 | INT 900 | 2 000 000 | |
| NZ 7622 | 60 000 | 25 | NZ 14900 | | 11 |
| NZ 7623 | 60 000 | 25 | INT 9001 | 60 000 | 31 |
| NZ 7624 | 60 000 | 25 | NZ 14901 | | |
| NZ 7625 | 25 000 | 25 | INT 9002 | 5 000 | 31 |
| NZ 7653 | 60 000 | 25 | NZ 14902 | | |
| NZ 7654 | 60 000 | 25 | INT 9003 | 75 000 | 31 |
| NZ 7655 | 25 000 | 25 | NZ 14903 | | |
| NZ 7656 | 25 000 | 29 | INT 9006 | Various | 31 |
| T/NZ 8215 | Various | 29 | NZ 14906 | | |
| T/NZ 8225 | 10 000 | 29 | INT 9007 | 60 000 | 31 |
| T/NZ 8235 | 12 100 | 29 | NZ 14907 | | |
| T/NZ 8238 | 15 000 | 29 | INT 9008 | 200 000 | 31 |
| T/NZ 8247 | 72 600 | 29 | NZ 14908 | | |
| T/NZ 8248 | 72 600 | 29 | INT 9009 | 500 000 | 31 |
| T/NZ 8259 | 72 600 | 29 | NZ 14909 | | |
| T/NZ 8266 | 18 150 | 29 | INT 9012 | 300 000 | |
| T/NZ 8275 | 30 000 | 29 | | | |
| T/NZ 8277 | 10 000 | 27 | | | |
| NZ 8645 | 10 000 | 27 | | | |
| NZ 8655 | 7 500 | 27 | | | |
| NZ 8685 | Various | 27 | | | |
| NZ 9558 | 40 000 | 11 | | | |

